

PSHE
 Tobacco
 Alcohol
 Drugs
 Overweight & Obesity
 Physical Activity
 Nutrition
 Heart Health
 Diabetes
 Hygiene
 Oral Health
 Training Models
 Men's Health
 Women's Health
 Sex & Relationships Education
 Pregnancy
 Labour & Birth
 Breastfeeding
 Child Health & Safety
 Health Services
 Social, Emotional & Behavioural Health

HealthEdco.co.uk

2020
CATALOGUE



Health Education for the 2020s— A Decade for Health Improvement

Welcome to our 2020 HEALTH EDCO and Childbirth Graphics catalogue. It's an exciting time for health education with increasing funds to the NHS, community services, and education. We also welcome parliamentary promises of extra funding for the statutory Personal, Social, Health and Economic (PSHE) education curriculum.

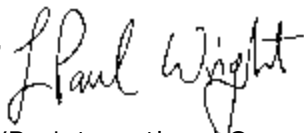
We continue to work with the government through the All-Party Parliamentary Group on "A Fit and Healthy Childhood" and with "Children First", an action group based at the House of Lords under the direction of Baroness D'Souza.

We know just how important it is to our nation that both young people and adults receive the very best public health education to prevent ill health now and as they age.

We also understand that we are here to aid you, as teachers, health professionals, community staff, charities, and emergency services to deliver these health education messages. We are therefore dedicated to the best research, development, and manufacturing processes for our products, ensuring that they are up-to-date and of the highest quality, allowing you to "Bring Health Education to Life" for your audience.

We welcome your feedback and communication. Without it, we can't make products that assist you in your vital work. Please do not hesitate to contact us and ask any questions.

Yours sincerely,



Paul Wright | VP - International Operations |
HEALTH EDCO & Childbirth Graphics | MFPH | FRSPH

WRS Group, Ltd. BA Hons, PGC in Education, PGC in Population Health, Masters in Public Health, Member of the Faculty of Public Health (MFPH), Fellow of the Royal Society of Public Health (FRSPH) & Member of the APPG on "A Fit & Healthy Childhood" at the House of Lords

Why Health Edco and Childbirth Graphics?

No other company has such an established foundation of creation and innovation in health education.

- Proprietary products – conceived and created by Health Edco and Childbirth Graphics.
- New innovations – an extensive product assortment in multiple health categories.
- Up-to-date research – to keep all products current and relevant.
- Advisory board – to maintain a finger on the pulse of health education.

What's Inside ...

	Tobacco	1–8
	Alcohol	9–12
	Drugs	13–15
	Physical Activity	16–17
	Nutrition	18–24
	Heart Health	25–27
	Overweight & Obesity	28–29
	Diabetes	30–31
	General Health	32–34
	Social, Emotional & Behavioural Health	35
	Sun Safety	36
	Hygiene & Oral Health	37–38
	Training Models	39–41
	Men's Health	42–43
	Women's Health	44–46
	Sex & Relationships Education	47–50
	Pregnancy	51–53
	Labour & Birth	54–57
	Breastfeeding	58–60
	Child Health & Safety	61–63
	Health Services	64–65

To view our full product line and pricing, please visit us at **HealthEdco.co.uk**. Check back often to see our ever-expanding line.

Minimum Order & Price Policy

- Minimum order is £40.00.
- Visit HealthEdco.co.uk for current pricing.

Positively Guaranteed

You deserve to be confident that what you buy has met our superior quality standards ... and yours. If you are not satisfied, call our customer service representatives at **0845 180 0505**. Health Edco and Childbirth Graphics offer a 1-year warranty and have a 90-day return policy. We'll work with you to ensure that your needs are met.

Items marked with an **E** are zero rated for VAT.

TOBACCO



SMOKING CONSEQUENCES 3-D DISPLAY

Eight graphic, permanently mounted models reveal how tobacco destroys normal, healthy organs. Features emphysematous and cancerous lungs, a premature baby, a stroke-affected brain, and more. Comes in self-contained carrying case. 71 cm x 69 cm opened.

[78881](#) 3-D Display



SPINSMART™ TOBACCO WHEEL

Put a negative spin on tobacco with this colourful wheel. Players spin the wheel to select one of eight categories and answer questions or participate in an activity related to that category. Includes questions with activities for Ages 6–10 and multiple-choice questions for Age 11–Adult. 47 cm x 58 cm.

[79983](#) Wheel



CLEM'S PHLEGM™ DISPLAY

Put 2 weeks' worth of phlegm that would be coughed up by a smoker in your audience's hands. This attention-getting, sealed jar demonstrates one of the nasty consequences of smoking. 9 cm x 15 cm.

[79201](#) Display



UPDATED!

EFFECTS & HAZARDS OF SMOKING FOLDING DISPLAY

Enlighten viewers with this informative display about the dangers of cigarettes and how many diseases it causes. Also covers problems related to secondhand smoke. 147 cm x 57 cm opened.

[79079](#) Folding Display
[79590](#) Carrying Case
[79015](#) Wall Hanger

TOBACCO



GIANT CIGARETTE ACTION DISPLAY

Reveal the benefits of quitting smoking that increase the longer you stay smoke-free. User simply turns the outer sleeve to see the benefits that begin from within minutes of the last cigarette and continue for years. 9 cm x 61 cm.

[79109](#) Display



TOBACCO INGREDIENTS™ DISPLAY

Help viewers understand how unhealthy tobacco smoke is by associating the chemicals in smoke with common disgusting substances also containing that chemical. Comes with a two-sided tent card that explains each of the models in the display and the harmful chemical represented. Model is 62 cm x 9 cm.

[79260](#) Display



BENEFITS OF NOT SMOKING 3-D DISPLAY

Show everyone four great benefits of not smoking with this interactive display. Each swivelling panel includes a healthy organ on one side and the same organ damaged by smoking on the other side. 62 cm x 30 cm x 8 cm.

[79032](#) 3-D Display

UPDATED!

BENEFITS OF QUITTING SMOKING TEAR PAD

Inspire anyone to quit smoking with this list of the many health benefits of quitting—starting within 20 minutes of the last cigarette. English on one side and Spanish on the other. 100 sheets per pad.

[52502](#) Tear Pad E



UPDATED!

WHAT'S IN TOBACCO SMOKE? TEAR PAD

A wonderful take-home companion to the Tobacco Ingredients Display, this two-sided tear pad covers the toxic chemicals that are in cigarette smoke and also found in other scary substances. 100 sheets per pad.

[52584](#) Tear Pad E



SMOKING EDUCATION PACKAGE

Give your audience an informative presentation about the mental and physical effects of smoking with this package. Can be presented as one longer session (approx. 8 hours) or several shorter sessions. Includes activities appropriate for both secondary and adult audiences.

COMPLETE PRESENTATION INCLUDES:

- Facilitator's guide with presentation script, worksheets, activities, quizzes, comprehensive test, and interactive, creative enrichment activities
- Tobacco Ingredients display
- The Effects & Hazards of Smoking folding display
- The Smoking Section poster
- The ABCs of Smoking booklet (50)

[79368](#) Package



A CLOSER LOOK AT TOBACCO 3-D DISPLAY

Magnifying the ways tobacco companies market their deadly wares, this display features ultra-realistic facsimiles of tobacco products enclosed behind Plexiglas. An entire section is devoted to products aimed at youth that have fun packaging and sweet taste to make them appeal to young people. 81 cm x 61 cm.

[79225](#) 3-D Display
[79585](#) Carrying Case



DROWNED LUNG™ MODEL

This interactive display brings the drowning sensation that COPD sufferers experience into focus. The lifelike model of a damaged lung swims in simulated phlegm, and picking up the jar triggers a voice module that plays a recording of a gasping, gurgling cough. Jar is 18 cm tall.

[78615](#) Model

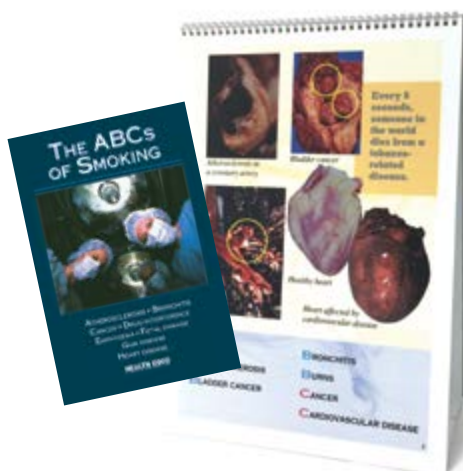


UPDATED!

QUIT SMOKING FOR LIFE FOLDING DISPLAY

Perfect to promote smoking cessation, this inspiring folding display provides practical tips and strategies to motivate smokers to quit smoking and stay smoke-free. 147 cm x 57 cm opened.

[79030](#) Folding Display
[79590](#) Carrying Case
[79015](#) Wall Hanger



THE ABCS OF SMOKING BOOKLET AND FLIP CHART

With graphic photos, this booklet and flip chart present alphabetical listings of conditions and diseases associated with smoking, making the reasons for not starting and quitting smoking quite elementary. Six-panel flip chart has presentation notes on back of each panel and is 30 cm x 43 cm. Booklet is 16 pages.

[43107](#) Flip Chart
[40013](#) Booklet E



HAND-HELD MECHANICAL SMOKER MODEL

Make a powerful statement about the dangers of smoking with this model. Deposits the tar from a cigarette on an X-ray depicting lung cancer. Comes with 100 Mini-Lung™ sheets, plastic bags, and a clip to help keep each bag in place. Use in well-ventilated areas. 14 cm x 29 cm x 6 cm.

[79202](#) Model

TOBACCO



LIFE OR DEATH LUNGS™ MODEL SET

Use this set of soft BIOLIKE 2™ models to show how smoking destroys the lungs. One lung is decimated by cancer and emphysema, while the other is pink and healthy. Includes carrying case. Models are 22 cm tall.

[79826](#) Model Set

SMOKED FOOT™ GANGRENE MODEL

Lifelike and graphic, this model depicts how smoking can cause tissue death from decreased blood supply, leading to gangrene. Comes with tent card. 9 cm x 24 cm x 10 cm.

[27029](#) Model



GIANT CIGARETTE MODEL

Flowing like smoke out of the end of this cigarette is a banner that lists dozens of the poisonous chemicals in cigarette smoke and provides information about why they are dangerous. Cigarette is 91 cm x 8 cm; banner is 48 cm x 89 cm.

[79110](#) Model



SHORTNESS OF BREATH CIGARETTE

A couple of breaths through this air-restricting tube conveys the panic-inducing sensation of not being able to breathe—something emphysema sufferers live with constantly. Comes with an information card. Set of 20.

[79709](#) Cigarettes (20)



SMOKEY EYES™ GAME KIT

This kit features special goggles that simulate the effects of macular degeneration, a vision-robbing disease closely associated with smoking. Wearing the goggles helps participants clearly see that the best decision is not to smoke. Comes with five stress balls, four toss balls, a catch bucket, and activity guide with reproducibles.

[79373](#) Game Kit



SMOKER'S ROULETTE GAME

With satirical artwork that lampoons popular cigarette brands, this roulette wheel demonstrates that smoking dangers include lung cancer, emphysema, heart disease, and more. Comes with presentation guide. 52 cm x 71 cm.

[79139](#) Game



UPDATED!

LOU-WHEEZE™ SMOKER'S LUNGS COMPARISON MODEL

Lou-Wheeze's two latex lung models illustrate their differences in appearance and function with no mess and minimal setup. As the bellows pump inflates the lungs, the healthy one deflates easily, while the diseased smoker's lung struggles to expel its air before the next "breath". Carrying case available separately. 43 cm x 60 cm.

79261 Model

79696 Carrying Case



SMOKED LUNG™ MODEL

A sad testament to a life destroyed by cigarettes, this BIOLIKE 2™ model shows severe damage from emphysema and features a cross-sectioned upper lobe that reveals a fibrous, pale-white malignancy. 13 cm x 23 cm x 10 cm.

26813 Model



DEATH OF A LUNG EASEL DISPLAY

Give viewers an inside look at smoking's destructive effects. Models depict a healthy lung, a lung with emphysema, and a cancerous lung. Comes with protective fleece cover. 23 cm x 30 cm.

79148 Easel Display



UPDATED!

COUGH UP A LUNG™ MODEL

Cross-sectioned, this life-size model can be opened to reveal that the case is terminal: Tumours crowd around the bronchus, the lung tissue is riddled with air pockets caused by emphysema, and the bronchial tube is plugged with slimy, green phlegm. 14 cm x 22 cm x 13 cm.

78958 Model



THE BREATHTAKING VIEW OF A SMOKER'S LUNG™ 3-D CHART

This lightweight 3-D chart delivers a powerful anti-smoking message. The damaged lung depicts COPD, tar buildup, and cancer. Chart can be hung on a wall using adhesive poster strips (not included). 61 cm x 76 cm.

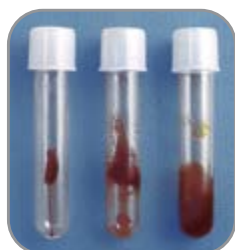
71141 3-D Chart



A YEAR'S WORTH OF TAR™ MODEL

Tar is sealed in an easy-to-handle, shatterproof container that allows everyone in your audience to get a firsthand look at the gooey, cancer-causing liquid created by cigarette smoke. Represents the amount of tar that goes through the lungs of a half-pack-a-day smoker in the span of 1 year.
9 cm x 14 cm x 9 cm.

[79120](#) Model

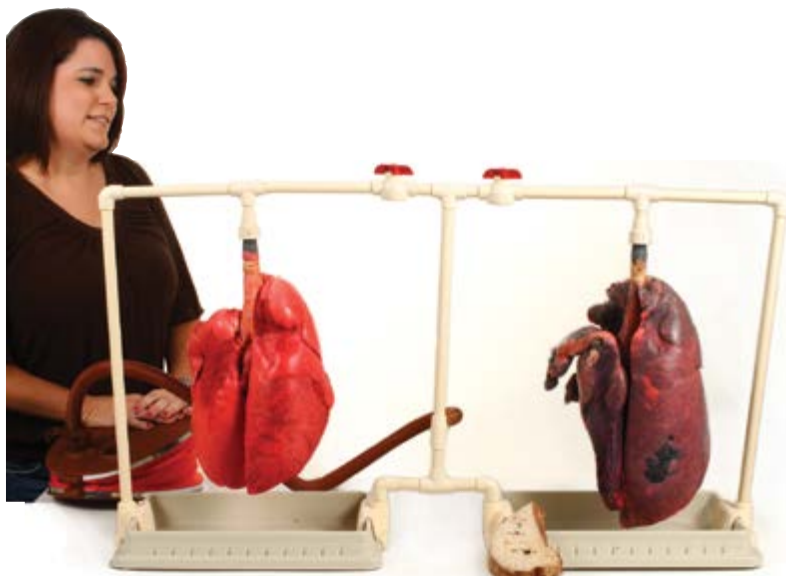


Cancer-causing tar collects in test tubes

SMOKEY SUE™ DISPLAY

When Smokey Sue's bulb is pumped while she "smokes" a cigarette, tar collects in the tube representing her lungs. The dirty tube can be passed around for a closer view of the gross tar buildup. Comes with 5 collection tubes and a carrying case. Use in well-ventilated areas.

[79206](#) Display



SIMULATED SMOKER'S LUNG COMPARISON KIT

With a set of simulated smoker's lungs and healthy pig lungs mounted side-by-side for comparison, the damage done by smoking is painfully clear, becoming even more evident when the lungs are inflated. Smoker's lungs feature palpable tumours. Also includes a section of dried lung for closer inspection.

[84349](#) Comparison Kit



TARRED LUNG™ MODEL

Cut in cross section, this lung features a greatly magnified model of an alveolus that shows how poisonous tar creeps into even the tiniest structures of the lung. Artwork depicts damage from emphysema. 18 cm x 28 cm.

[79234](#) Model



A PACK OF TOXIC TAR™ DISPLAY

These two unique cigarette models contain the combined total amount of tar a smoker inhales from just a single pack of cigarettes. Pack is 5 cm x 3 cm x 9 cm.

[79203](#) Display



SMOKER'S FOUL MOUTH™ DISPLAY

Highlight the undesirable oral consequences of smoking. Shows gum disease, tooth decay, and lip cancer. Includes two tongues: One depicts leukoplakia and cancer, whilst the other portrays "hairy tongue". 18 cm x 14 cm x 18 cm.

[79287](#) Display

[79288](#) Carrying Case

MR. GROSS MOUTH™ MODEL

Life-size, handpainted, hinged replica of the teeth, tongue, and gums features lifelike detail of the disgusting oral damage done by smokeless tobacco. Comes mounted on a wooden display base and includes a jar of tobacco to create tobacco juice.

15 cm x 10 cm x 20 cm.

[79152](#) Model

[79161](#) Carrying Case



GIANT MR. GROSS MOUTH™ DISPLAY

When it comes to telling the truth about the effects of smokeless tobacco use, this large model can't stop talking. Depicts gingivitis, gum recession, three kinds of cancer, cavities, and tooth loss. Includes jar of tobacco for making tobacco juice. 23 cm x 30 cm x 15 cm.

[79159](#) Display

[79289](#) Carrying Case



HARRY'S SCARY TONGUE™ DISPLAY

Made of BIOLIKE 2™ for a lifelike look and feel, Harry's tongue shows "hairy tongue" on one side and tongue cancer on the other.

38 cm x 34 cm x 42 cm.

[79275](#) Display



THE CONSEQUENCES OF SECONDHAND SMOKE 3-D DISPLAY

The eight permanently mounted models on this display quickly snuff out any notion that secondhand smoke is harmless. Comes in a self-contained carrying case. 71 cm x 69 cm opened.

[79605](#) 3-D Display



CAUSE OF DEATH: SECONDHAND SMOKE DISPLAY

With emphysema blebs and tumours, this "post-mortem" lung model shows that secondhand smoke can be an indiscriminate killer, infiltrating and damaging nonsmokers' lungs just as it does those of a smoker. 13 cm x 18 cm.

[78748](#) Display

PUFFING POISON TANK: A SECONDHAND SMOKE TRAP™

A smokeless smoke demonstrator, this tank features a bellows pump that sends puffs of simulated secondary smoke streaming out of a facsimile cigarette. A special unit behind the nonsmoker's face stains a removable filter with tiny "smoke particles"—a dramatic demonstration of how secondary smoke affects others. Residue also accumulates on the inside of the box, showing the penetration of thirdhand smoke. Includes 50 filters, "smoke particle" powder, and more. 110 volts required. 29 cm x 27 cm x 24 cm.

[79596](#) Smoke Trap



SMOKEY SUE SMOKES FOR TWO™ MODEL

As Sue smokes a cigarette, tar builds up around the gaunt foetal model and gradually tints the clear foetal environment a sickly shade of amber. Use in well-ventilated areas. 13 cm x 36 cm x 13 cm.

[79210](#) Model



SMOKING AND YOUR BABY

Present the critically important message that babies and pregnant women can be harmed by smoking. Folding display is 111 cm x 57 cm opened. Pamphlet has 8 panels.

[79022](#) Folding Display
[79590](#) Carrying Case
[79015](#) Wall Hanger
[38619](#) Pamphlet **E**



UPDATED!

EFFECTS & HAZARDS OF SECONDHAND SMOKE FOLDING DISPLAY

This folding display gives the basic facts about secondhand smoke and its dangers, explaining how it affects both adults and children. Outlines ways to protect family members from secondhand smoke. 147 cm x 57 cm opened.

[79010](#) Folding Display
[79590](#) Carrying Case
[79015](#) Wall Hanger



ALCOHOL

Drive Home the Dangers of Drinking and Driving

Provide startling lessons to make young people put the brakes on drinking and driving. Each alcohol education kit features specially designed glasses or goggles that re-create the visual distortion, loss of perception, and lack of control that impair drink-drivers, reaching young people with the message that drink-driving is deadly.



D.W.EYES™

Alcohol Impairment

The D.Weyes Game Kit shows young people how even simple tasks—such as throwing a ball, walking a line, or navigating a simulated road—are difficult whilst under the influence.

Complete Game Kit Includes:

- 2 pairs of goggles or glasses
- Instructional DVD
- Wreck Your Life game
- Teacher's guide
- 25 booklets

79187 Game Kit (with goggles)
79198 Game Kit (with glasses)

DRUNK & DANGEROUS™

Drinking and Driving

The Drunk & Dangerous Package is an interactive way for young people to discover the dangers of drinking and driving. Participants "drive" the car whilst wearing the goggles or glasses. Using the plastic champagne glasses to simulate a road course, participants quickly discover that keeping the car straight is nearly impossible, exactly like driving whilst intoxicated.

Complete Package Includes:

- 1 pair of goggles or glasses
- Remote control car
- Beverage set (also available separately)
- Presentation notes

79924 Package (with goggles)
79923 Package (with glasses)
79755 Beverage Set

BOOZED & CONFUSED™

Drinking and Driving at Night

Many young people risk drinking and driving at night. The Boozed & Confused Nighttime Goggles are specifically designed to simulate the nighttime conditions that drink-drivers may face.

Complete Game Kit Includes:

- 2 pairs of Boozed and Confused Nighttime Goggles (also available separately)
- 10 stress balls
- 6 flashlights
- 2 plastic bowling balls
- 10 plastic bowling pins
- 1 roll of tape
- Activity guide

79297 Game Kit
79295 Goggles

SMASHED & TRASHED™

UPDATED!

Disposable Impairment Glasses

Designed to be used a few times and then thrown away, the Smashed and Trashed Disposable Glasses simulate the disorientation, loss of balance, and distorted perception of intoxication. An economical way to reach a large number of young people.

Classroom Set Includes:

- 25 sets of glasses
- Teaching suggestions

78963 Glasses (set of 25)

D.Weyes Goggles or Drunk & Dangerous Glasses may also be purchased separately.

79197 Goggles
79190A Glasses

ALCOHOL



WHAT IS A UNIT? DISPLAY MADE FOR UK

Bring viewers' understanding of alcoholic units up to the proper "level" with this colourful display. Each of the five glasses, which represent popular alcoholic drinks, shows how much of the beverage constitutes one unit as well as how many total units are in the glass. Comes with an informative 25-cm x 38-cm display mat that resembles a serving tray.

79631 Display



CAN YOU POUR A UNIT?™ ACTIVITY SET **MADE FOR UK**

Do you know when to say “when”? Hands-on activities help participants judge the appearance of a unit of alcohol for different types of drinks. Users pour liquid into typical beverage glasses and then measure it to see how many units of alcohol they would have consumed. Includes measuring container, carafe, pint glass, wine glass, mixer glass, tumbler, food colouring, activity guide, and more.

79837 Activity Set



SPIN THE BOTTLE GAME

Help users learn how alcohol can spin their life out of control. Featuring a mock bottle of whisky on the wheel, players land on various consequences of alcohol abuse. Includes presentation notes and question cards. 52 cm x 71 cm.

79339 Game



UPDATED!

ALCOHOL FOLDING DISPLAYS

What You Should Know About Binge Drinking discusses alcohol poisoning, effects of binge drinking on sexual behaviour and academic performance, and how to get help for a drinking problem. Effects & Hazards of Alcohol describes short-term and long-term effects of alcohol abuse, including organ damage and effects on children. Both displays are 147 cm x 57 cm opened.

79021 Binge Drinking Folding Display

79012 Alcohol Folding Display

79590 Carrying Case

[79015](#) Wall Hanger

ALCOHOL ABUSE CONSEQUENCES 3-D DISPLAY

Featuring eight permanently affixed models, this display reveals the ways alcohol abuse damages the body. Easy-to-understand text describes each condition. Comes in self-contained carrying case. 71 cm x 69 cm opened.

[78879](#) 3-D Display

Raise awareness of the consequences of alcohol abuse.

**SEX UNDER THE INFLUENCE AWARENESS KIT**

With its vision-distorting goggles, this unique kit proves that if you're too drunk to perform simple tasks such as walking, then you're too drunk to adequately protect yourself from risky sex. Kit includes one set of Boozed & Confused Night-time Goggles, Economy Condom Training Model, syringe, UV light-sensitive fluid, latex condoms, an activity guide, and carrying case.

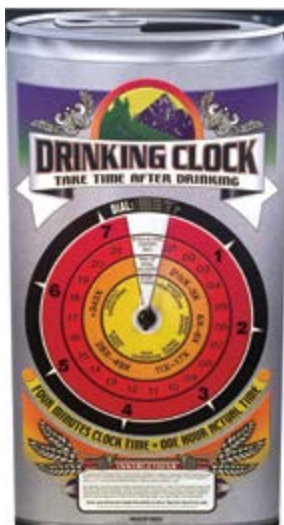
[75080](#) Kit
[78645](#) UV Flashlight

**PICKLED LIVER MODEL**

The BIOLIKE 2™ liver model floating ominously in this specimen jar shows the long-term effects of cirrhosis—scar tissue and nodules cover its surface like giant scales. The message is simple: With the liver unable to function normally, death is imminent.

11 cm x 19 cm.

[79723](#) Model

**DRINKING CLOCK ACTION DISPLAY**

Interactive clock reveals the approximate amount of time the body takes to process alcohol. Ideal for driver's education, health classes, and more. Comes with teaching suggestions. 43 cm x 81 cm.

[79130](#) Action Display

ALCOHOL



WEIGH YOUR OPTIONS™: ALCOHOL DRINKS DISPLAY

Weighted bags with images of popular drinks let participants feel the effects of extra calories from alcoholic beverages. Weights reflect the amount gained as a result of daily consumption of each beverage for a month. Accompanying tent card measures 13 cm x 20 cm and explains how the extra calories can result in extra weight.

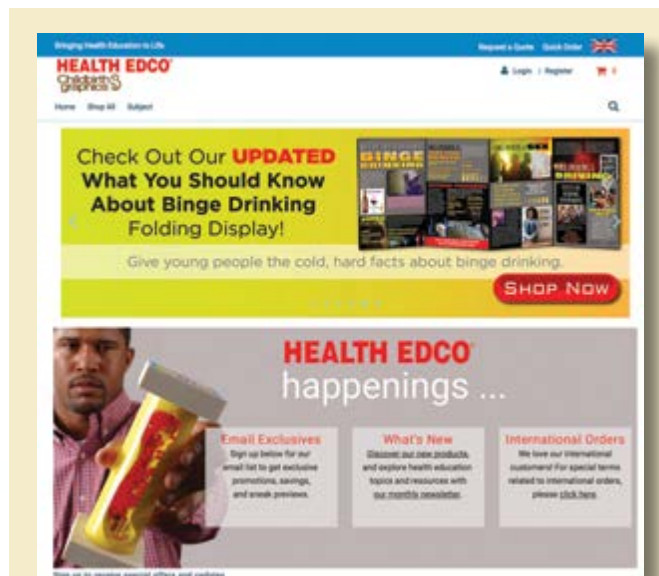
78217 Display



ALCOHOL CHANGES EVERYTHING™ GAME

Decode the hard facts about how life can change dramatically when you abuse alcohol. Players earn points by answering questions about alcohol abuse and use the included alcohol bottle decoder to read special cards to determine whether alcohol has caused them costly consequences. For 2–8 players or teams. Age 12–Adult.

79063 Game



For our complete line of alcohol abuse prevention products, visit HealthEdco.co.uk



ABUSE BOOZE AND LOSE™ DISPLAY

These reproductions of popular alcoholic beverages have satirical labels reminding revellers that they could be opening up a host of social and physical problems. These consequences include sexually transmitted infections, poor academic performance, accidents, distorted judgement, and more. Each label contains information on a different consequence of alcohol abuse. Plastic bottles are safe for classroom use.

79268 Display

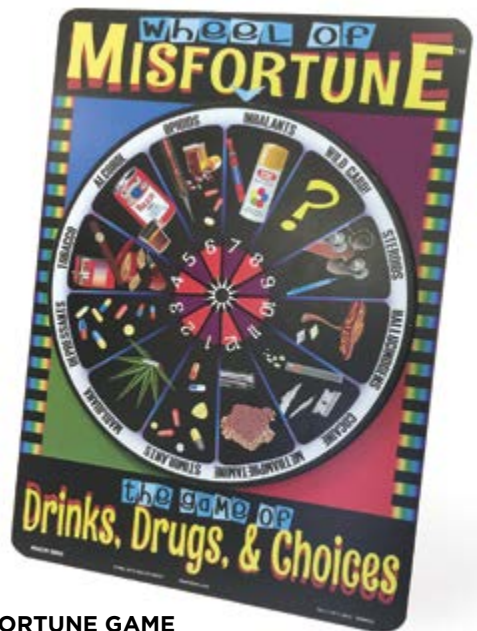


Elevate your group's understanding of the consequences of substance abuse with this fun game. The 56-cm x 71-cm game board is ideal for large or small groups. For 2–8 players or teams. Age 12–Adult.

NEW!

Combat opioid abuse with education and awareness. This folding display reveals the cold, hard facts about prescription opioid and heroin abuse, from addiction to overdose and death. 147 cm x 57 cm opened.

[78884](#) Folding Display
[79590](#) Carrying Case
[79015](#) Wall Hanger



Educate your audience about dangerous drugs and the short- and long-term effects of drug abuse. Features 3-D models behind a Plexiglas cover. Comes with an informative, reproducible handout. Case is 74 cm x 51 cm opened. Stand-alone panels are 30 cm x 43 cm each.

NEW!

Featuring painted, 3-D organ models, this riveting, framed display emphasises that opioid abuse is a leading cause of overdose and death. Highlights the body-wide damage opioid abuse can cause. Includes built-in stand for tabletop display.
52 cm x 66 cm.

Anatomy of an Opioid Abuser

Brain
Opioids bind to receptors in the brain, blocking pain signals and creating a sense of euphoria. Over time, the brain adapts to the presence of the drug, leading to tolerance and dependence.

Lungs
Opioids can slow down breathing, which can lead to respiratory failure and death. This is especially dangerous when combined with other depressants like alcohol or benzodiazepines.

Heart
Opioids can lower blood pressure and heart rate, which can lead to heart failure and death. This is especially dangerous when combined with other heart medications.

Stomach and Intestines
Opioids can slow down the digestive system, leading to constipation and bloating. This can be uncomfortable and may lead to more serious complications if not managed.

Blood Vessels
Opioids can cause blood vessels to constrict, which can lead to high blood pressure and heart disease. This is especially dangerous when combined with other blood pressure medications.

Bladder
Opioids can cause urinary retention, which can lead to urinary tract infections and kidney damage. This is especially dangerous when combined with other urinary medications.

Health Effects
Opioid use can lead to a variety of health problems, including:
• Respiratory depression
• Heart failure
• Constipation
• Urinary retention
• High blood pressure
• Kidney damage
• Liver damage
• Pancreatitis
• Depression
• Anxiety
• Sleep apnea
• Seizures
• Death

Don't let opioid painkillers be the DEATH of you.

HEALTHLINE

This spinning wheel is at the centre of an engaging game in which players identify various drugs and answer questions about their effects. Covers illegal, prescription, and over-the-counter drugs. Also includes multiple-choice questions that develop value judgements. Comes with questions for Ages 6–10 and Ages 11–17. 52 cm x 71 cm.

Order online: HealthEdco.co.uk Order by email: Info@wrsgroup.co.uk Order by phone: 0845 180 0505



UPDATED!

DRUG IDENTIFICATION GUIDE

Show commonly abused drugs and drug paraphernalia in a whole new dimension. Features attached, realistic 3-D facsimiles enclosed behind Plexiglas. Stands on any tabletop for easy display. Includes reproducible handout. 81 cm x 61 cm.

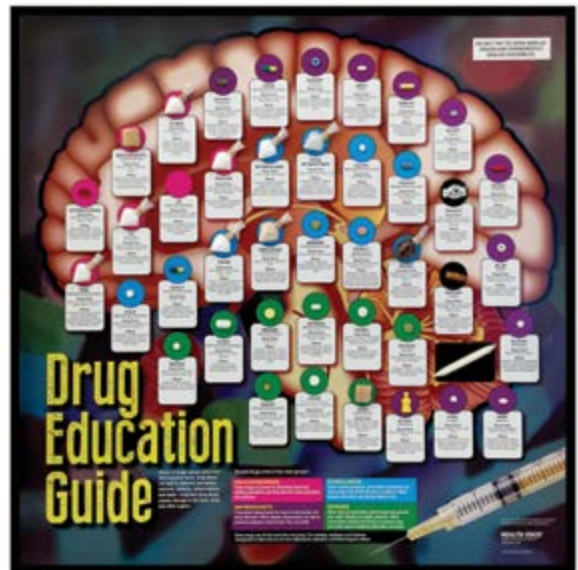
[79216](#) Guide
[79585](#) Carrying Case



DIAL-A-DRUG WHEEL

Turn the wheel for easy access to drug information, including the most common types of drugs, their effects and hazards, their medical uses, and how they are used. 20-cm diameter.

[85100](#) Wheel



UPDATED!

DRUG EDUCATION GUIDE

From opioid painkillers to stimulants and more, this Plexiglas-covered guide features incredibly realistic facsimiles of more than 40 illegal and prescription drugs. Identifies basic drug groups and their medical uses as well as the drug names, slang terms, and possible effects of use. 61 cm x 61 cm.

[79236](#) Guide
[79585](#) Carrying Case

CATEGORY	DESCRIPTION	APPEARANCE	RISK	MEDICAL USES	EFFECTS & CONSEQUENCES	SIGNS OF OVERDOSE
1	Alcohol	[Image of a bottle]	High	Antiseptic, disinfectant	Intoxication, impaired judgment, aggression	Slurred speech, loss of consciousness
2	Amphetamines	[Image of pills]	High	Stimulant, appetite suppressant	Increased energy, alertness, heart rate	Agitation, insomnia, chest pain
3	Benzodiazepines	[Image of pills]	Medium	Sedative, anxiolytic	Relaxation, sleep, reduced anxiety	Drowsiness, confusion, loss of coordination
4	Cocaine	[Image of powder]	High	Stimulant	Increased energy, alertness, heart rate	Agitation, insomnia, chest pain
5	Ecstasy	[Image of pills]	High	Stimulant, hallucinogen	Increased energy, alertness, heart rate	Agitation, insomnia, chest pain
6	Heroin	[Image of powder]	High	Depressant	Relaxation, sleep, reduced anxiety	Drowsiness, confusion, loss of coordination
7	Marijuana	[Image of plant]	Medium	Psychoactive	Altered perception, increased appetite	Impaired judgment, aggression
8	Methamphetamine	[Image of pills]	High	Stimulant	Increased energy, alertness, heart rate	Agitation, insomnia, chest pain
9	Nicotine	[Image of cigarette]	Medium	Stimulant	Increased energy, alertness, heart rate	Agitation, insomnia, chest pain
10	Opioids	[Image of pills]	High	Depressant	Relaxation, sleep, reduced anxiety	Drowsiness, confusion, loss of coordination
11	Prescription Drugs	[Image of pills]	Medium	Various	Various	Various
12	Recreational Drugs	[Image of pills]	High	Various	Various	Various
13	Street Drugs	[Image of pills]	High	Various	Various	Various
14	Substance Abuse	[Image of pills]	High	Various	Various	Various

DRUG AWARENESS GUIDE

Divided into eight categories, this guide explains what each drug category is, how it's used, the drug's effects, and possible signs of overdose. Includes built-in easel for tabletop display. An unframed, laminated version is also available. 91 cm x 61 cm.

[79220](#) Display
[90671](#) Chart



UPDATED!

EFFECTS AND HAZARDS OF SUBSTANCE ABUSE FOLDING DISPLAY

With compelling graphics and persuasive text, this folding display paints an unflattering picture of a number of drugs that can have dangerous and deadly effects. Includes information on getting help for a substance abuse problem. 147 cm x 57 cm opened.

[79053](#) Folding Display
[79590](#) Carrying Case
[79015](#) Wall Hanger

NEW

DRUG ABUSE CONSEQUENCES 3-D DISPLAY

Reveal how drug abuse can lead to serious health consequences with this startling 3-D display. Features eight painted, permanently affixed models and simple text highlighting consequences of drug abuse, including kidney damage, HIV infection, heart attack, and more. Comes in self-contained carrying case. 71 cm x 69 cm opened.

78928 3-D Display



UPDATED!

MARIJUANA FOLDING DISPLAY

Cover the realities of marijuana (cannabis) use with this detailed folding display. Explains the dangers of marijuana and contains information about seeking help for a drug problem. 147 cm x 57 cm opened.

79269 Folding Display

79590 Carrying Case

79015 Wall Hanger

UPDATED!

MARIJUANA FLIP CHART

With information on the appearance, side effects, and physical consequences of marijuana, this 6-panel flip chart explains the health risks associated with marijuana use. Features presentation notes on back of each panel and is 30 cm x 43 cm.

43111 Flip Chart



METH MOUTH: AN INSIDE LOOK DISPLAY

Model shows the serious oral consequences of meth use, such as severely decayed teeth, inflamed gums, and more. Also features lifelike tongue model with ulcer and informative text that explains how meth harms the mouth and body. 25 cm x 27 cm x 42 cm.

79758 Display



DRUGGED & DISTORTED™ GAME

Demonstrate to any group how drugs severely limit the ability to do basic tasks effectively. The goggles and motion-restriction hand work upon your senses, distorting perceptions, thinking, and coordination.

GAME INCLUDES:

- Pair of Drugged and Distorted Goggles
- 2 Motion-Restriction Hands (one medium and one large)
- Activity Guide with four activities and discussion questions that reinforce the educational points of each activity

75052 Game

PHYSICAL ACTIVITY



SPINSMART™ PHYSICAL ACTIVITY WHEEL

Put a fun spin on exercise with this energetic, muscle-awakening wheel! Players answer questions from one of eight categories after spinning the wheel, and they earn extra points by doing a specified exercise. Includes questions for Ages 6–10 and Age 11–Adult. 47 cm x 58 cm.

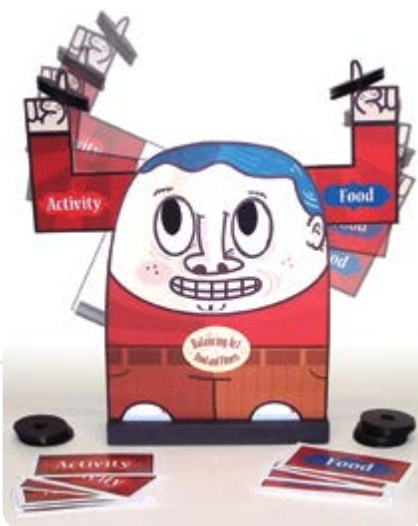
79097 Wheel

UPDATED!

BALANCING ACT OF FOOD & FITNESS ACTIVITY

By answering questions and placing calorie discs on this limber-armed balancing man, players get a tangible lesson in how the foods they eat must be counterbalanced with calorie-burning activities. Comes with detailed presentation guide. Scale measures 30 cm x 32 cm x 6 cm.

75374 Activity



CONSEQUENCES OF AN INACTIVE LIFESTYLE 3-D DISPLAY

In this 3-D display, eight permanently affixed models outline the consequences of physical inactivity, ranging from cancer to heart disease to kidney stones. Contained within its own carrying case, it measures 71 cm x 69 cm opened.

79621 3-D Display



BENEFITS OF PHYSICAL ACTIVITY 3-D DISPLAY

This unique display, with its four swivelling panels mounted front-and-back and 3-D anatomical models, paints contrasting pictures of a body bolstered by exercise and one damaged by a sedentary lifestyle. 62 cm x 30 cm x 8 cm.

79632 3-D Display



WATCH MUSCLE TAKE ON FAT!

Use Health Edco's fat and muscle models to pump up understanding!

Together, our fat and muscle models say plenty about the differences between lean muscle and excess body fat. Our streamlined muscle models demonstrate how muscle takes up about half the volume of fat whilst weighing the same amount. By contrast, our fat models show how extra calories and inactivity can damage your health and shape. Masses of Muscle™ represent muscle at rest, while Mighty Muscles™ depict flexed clusters. All models feature a lifelike feel. Each set comes with a carrying case.



26040 **UPDATED!** Globos of Fat and Masses of Muscle Set

26030 **UPDATED!** Glob of Fat Model (1 lb)

26039 **UPDATED!** Glob of Fat Model (5 lb)

26031 **UPDATED!** Globos of Fat Model Set (1 lb and 5 lb)

26037 Mass of Muscle Model (1 lb)

26034 Mass of Muscle Model (5 lb)

26038 Masses of Muscle Model Set (1 lb and 5 lb)

26025 **UPDATED!** Fat Chunk and Mighty Muscle Set

26016 Fat Chunk Model (1 lb)

26014 Fat Chunk Model (5 lb)

26017 **UPDATED!** Fat Chunk Model Set (1 lb and 5 lb)

26021 Mighty Muscle Model (1 lb)

26022 Mighty Muscle Model (5 lb)

26023 Mighty Muscle Model Set (1 lb and 5 lb)



UPDATED!

EXERCISE FACTS FOLDING DISPLAY

Focusing heavily on the great benefits exercise provides, this display discusses aerobic, strength, and flexibility exercises. Also offers exercise recommendations for all age groups. 147 cm x 57 cm opened.

79293 Folding Display

79590 Carrying Case

79015 Wall Hanger

NUTRITION



SPINSMART™ EATWELL GUIDE WHEEL MADE FOR UK

Turn nutritional education into a game! Players spin the wheel, which is divided into eight food categories, and then answer multiple-choice questions based on the Eatwell Guide for points and unscramble words for bonus points. Includes questions for Ages 6–10 and Age 11–Adult. 47 cm x 58 cm.

[78890](#) Wheel



THE EATWELL GUIDE POSTER MADE IN UK

Inspire healthy eating with the UK's Eatwell Guide. Colourful A2 poster includes all the food groups with current government guidelines. Laminated.

[30079](#) Poster

Please contact customer service for large volume pricing.



FAST FOOD BLUBBER BUSTERS™ DISPLAY

These BIOLIKE 2™ models help viewers make a visceral connection between fast food intake and excess body fat. Display mat featuring calorie and fat content of each food measures 51 cm x 39 cm.

[26127](#) Display



BLUBBER BUSTERS™

Featuring nine BIOLIKE 2™ food models that feel just like fat, this fun display emphasises how extra calories lead to fat gain. Mat listing calorie and fat content of each food measures 37 cm x 25 cm.

[26125](#) Display

For our complete line of nutrition education products, visit HealthEdco.co.uk



EATWISE™ POP-UP BANNER

Good nutrition is a big deal, and this banner pops up to make a huge impression about healthy eating. 80-cm x 189-cm banner breaks down into a 84-cm x 10-cm x 10-cm carrying case.

[70051](#) Banner

UPDATED!

VITAMIN/MINERAL ID GUIDE FOLDING DISPLAY

Giving a quick overview of 23 essential vitamins and minerals and the function each one performs in the body, this colourful folding display highlights the importance of eating a wide variety of healthy foods. 147 cm x 57 cm opened.

[79363](#) Folding Display
[79590](#) Carrying Case
[79015](#) Wall Hanger



DAILY SATURATED FAT CHECKER™ MADE FOR UK

If saturated fat is a big part of your daily diet, the odds of having serious health problems are stacked against you. Featuring a thermometer-type scale, this display helps viewers tally up their saturated-fat intake by stacking spongy "fat" discs. Each disc represents 1 gram of saturated fat. Participants are surprised at how fast the fat stacks up! Comes with 40 discs, 20 illustrated food cards, and activity guide. 19 cm x 41 cm x 8 cm.

[77206](#) Checker



MADE IN UK

MY BODYBOARD COMPLETE NUTRITION & EATWELL GUIDE SETS

Pupils will be naturally attracted to this colourful, interactive magnetic display. Use the front of the board for displaying any of the more than 90 magnets in the Nutrition Magnetic Pack. The reverse side of the board features the Eatwell Guide and is perfect for creating examples of healthy eating with the Eatwell Guide Magnetic Pack, which contains more than 70 pieces. Packs include lesson plans. Professional board is 90 cm x 60 cm. School board is 60 cm x 45 cm. Age 5–Adult.

[30078](#) Professional Set

[30077](#) School Set



COLD CASE™: THE FACTS AGAINST SWEETENED DRINKS DISPLAY

The connection between sugary beverages and negative health consequences becomes crystal clear with this display. Features a cooler with six beverage models. Each weighted model contains the number of grams of liquid sugar consumed by drinking 592 ml of the corresponding beverage every day for 1 week. Comes with presentation notes and a 51-cm x 41-cm display mat.

[78946](#) Display

FIZZICS OF SODA™ DISPLAY

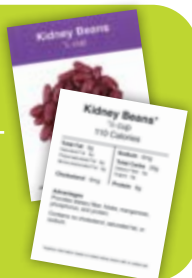
More than 2 lb of body fat—that's how much weight you could gain in a month from two 355-ml sugary colas a day. You also would consume 5 lb of sugar, illustrated here by a sugar bag and fat model. The mammoth-size cola can turns viewers toward a life of fewer fizzy drinks. Can measures 27 cm x 41 cm.

[79296](#) Display



faux foods

Food packages include cards with nutrition facts colour-coded by food type.



FAUX FOODS BASIC PACKAGE

An economical way to start your faux food collection, this package features 23 foods from all the food groups. Also includes beverages and desserts. Food cards with nutritional information are included for each food.

79771 Package (23)

FAUX FOODS STARTER PACKAGE

A step above the basic package, this collection features 40 foods from all the food groups. Also includes beverages and desserts. Food cards with nutritional information are included for each food.

79717 Package (40)

FAUX FOODS DELUXE STARTER PACKAGE

As the name indicates, this is our best, most comprehensive faux food package, packed full with 57 foods from all the food groups. Also includes beverages and desserts. Food cards with nutritional information are included for each food.

79716 Package (57)

FAUX FOODS DIABETIC EXCHANGE PACKAGE

This set of 39 food models shows that, with some planning, there is an endless variety of foods people with diabetes can enjoy. Comes with examples of starches, fruits, non-starchy vegetables, dairy products, meat and meat alternatives, fats, sweets, and combination foods. Includes informative food cards with nutritional information for each food.

79772 Package (39)



For a complete listing of our faux food packages, visit HealthEdco.co.uk

FIZZ TO FAT™ DISPLAY

Show viewers the surest way to pour on the weight with this clever model. As the cola cascades out of the bottle, it turns into thick, yellowish fat, symbolising how the extra calories we get from sugary beverages can turn into body fat. Model measures 13 cm x 36 cm x 8 cm.

[78965](#) Display



SUGAR TEST TUBE SETS

Each of these test tube sets displays the often shocking amount of sugar in grams contained in common foods. Each set includes ten test tubes, display rack, tent card, nylon carrying case, and informative reproducible handout.

[79128](#) Sugar

[79044](#) Hidden Sugar

SUGARCOATED: A CLOSER LOOK AT SUGAR™ DISPLAY

With ten models of common foods and corresponding sugar-filled test tubes, this display allows you to compare the amount of sugar in each food and reveals that added sugar consumption packs on extra weight. Also includes a tent card, ten food cards with nutritional information, carrying case, and reproducible handout.

[78995](#) Display



RETHINK YOUR DRINK CHART

Featuring ten popular beverages, this chart graphically shows how many teaspoons of sugar are contained in each one, urging greater awareness of liquid sugar intake. Laminated 46 cm x 61 cm.

[90300](#) Chart

A QUICK CUP OF EMPTY CALORIES™ ACTIVITY SET

Participants tally empty calories from fat and sugar in a particular coffee drink by filling beverage cups with coloured dice. Includes eight cups representing hot and cold beverages in 355-ml and 592-ml sizes, 150 "fat" cubes, 150 "sugar" cubes, 24 informational beverage coasters, and a detailed activity guide.

[79047](#) Activity Set



VAT OF FAT™ DISPLAY

People love to pick up this jar of gooey, simulated fat that is a reminder that excess calories equal excess weight. Jar contains about 1 lb of goopy fat. Label on the back describes how much weight could be gained in a year from excess calories. 11 cm x 19 cm.

[79129](#) Display



MILK FAT COMPARISON DISPLAY

See how much difference it makes to switch from higher-fat milk to lower fat or skimmed milk. Features models of four common varieties of milk (whole, 2%, 1%, and skimmed) and an informative tent card shaped like a milk carton. Models show the percent of calories from fat in each milk type. Models are 6 cm x 10 cm.

[75077](#) Display



FAT CHANCE: A CLOSER LOOK AT FAST FOOD™ DISPLAY

A combination of ten tempting food models and corresponding fat-filled test tubes provides a graphic representation of the saturated and unsaturated fat content of common fast foods. Also includes ten food cards with nutritional information, carrying case, and reproducible handout.

[79056](#) Display



FAT FACTS TEST TUBES

Filled with oozing simulated fat, these tubes are an interactive reminder that too much fat can cause health problems. Each set includes ten test tubes, display rack, tent card, nylon carrying case, and informative reproducible handout.

[79280](#) Fat Facts Test Tubes Sets (5)
[79125](#) Fat Facts: Saturated and Unsaturated
[79135](#) Fat Facts: Comparison Foods
[79173](#) Fat Facts: Snack Foods
[79136](#) Fat Facts: Vending Machine Foods
[79134](#) Fat Facts: Fast Foods



STEALTHY AND UNHEALTHY™ DISPLAY

This display features a giant saltshaker representing the average yearly sodium intake for most people. Two larger-than-life artery models—one healthy and one diseased—help explain the consequences of a high-sodium diet. The models fit inside a giant soup can that highlights the idea that even “healthy” foods may be secretly harbouring hidden sodium. Can measures 20 cm x 33 cm.

[78131](#) Display



SODIUM FACTS TEST TUBE SET

As this test tube set reveals, even foods that don't taste salty can be high in sodium. Highlights the sodium content of ten common foods. Includes ten test tubes, display rack, tent card, nylon carrying case, and informative reproducible handout.

[79131](#) Set

UPDATED!

VISUALIZE YOUR PORTION SIZE DISPLAY

Featuring clever mash-ups of common foods and household objects, this display trains viewers' eyes to recognise portion sizes by relating them to everyday things. Carrying case measures 51 cm x 36 cm x 9 cm.

[79204](#) Display



FOOD IMAGE ADULT PORTION PLATE

With images of real food, this colourful plate suggests positive nutritional choices and appropriate portion sizes. Dishwasher safe but not intended for microwave use. 24-cm diameter.

[50881](#) Adult's Plate

UPDATED!

WEIGH YOUR OPTIONS™ DISPLAY

Feel how much weight can be gained by little snacks here and there that are in excess of daily calorie needs. Models reflect how much weight can be gained in one month by consuming extra calories each day.

[79080](#) Display



JUNK FOR SALE™ DISPLAY

Cleverly designed to look like a snack machine, this display's satirical takeoffs on common junk foods remind viewers that some things we love to eat are best left behind glass. Labels emphasise the sugar, saturated fat, sodium, and calories that frequently lurk in unhealthy snacks. 61 cm x 81 cm.

[79064](#) Display



PORTION PATROL™ ACTIVITY SET

Use this lineup of 12 food models to help viewers learn to pick out correct portion sizes and cut extra calories. Activity guide included.

[79768](#) Set



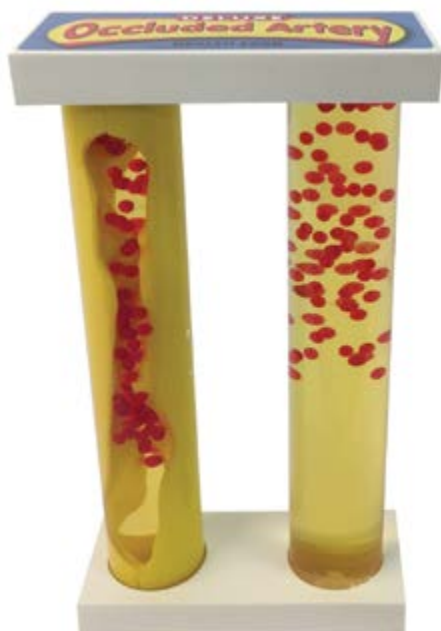
FOOD CHOICES: TAKE YOUR PICK INTERACTIVE FLIP CHART

This flip chart's divided pages allow side-by-side comparison of 40 entrees and side dishes, and users count out cubes representing each food's calories, fat, and carbs. Reverse panels contain notes on nutritional content and activities. Includes presentation guide and 150 cubes. 36 cm x 30 cm.

[43135](#) Flip Chart



HEART HEALTH



DELUXE OCCLUDED ARTERY MODEL

This time-tested Health Edco classic magnifies the differences between a healthy artery and one that is clogged with plaque. Flip the display over, and watch as blood cells zip through the clean artery, whilst those in the atherosclerotic artery sluggishly wind their way through cholesterol buildup—and stop—capturing the moment a heart attack occurs. 18 cm x 30 cm x 8 cm.

[79153](#) Model



OCCLUDED ARTERY MODEL

Flip this model and watch as blood cells struggle to flow through the plaque-clogged artery. As blood flow decreases, more blood cells pile up in the narrowing gap. Finally, the cells stop moving altogether and—bam!—it's a heart attack. 7 cm x 17 cm.

[79145](#) Model



CLOGGED ARTERY MODEL

Squoosh! Made of BIOLIKE 2™ synthetic tissue, this artery model is filled with yellow simulated plaque buildup. A great visual for discussing the importance of healthy cholesterol levels. 3 cm x 8 cm.

[26526](#) Model



DEATH OF AN ARTERY EASEL DISPLAY

Mounted on a blood-red background, this set of five models dramatically shows the smothering effect of waxy plaque buildup inside a coronary artery. Comes with protective fleece cover. 23 cm x 30 cm.

[79149](#) Easel Display

For our complete line of
heart health products,
visit HealthEdco.co.uk



CHOLESTEROL

Understanding the ins and outs of cholesterol can be as sticky as the substance itself. This 16-page booklet and six-panel flip chart answer frequently asked questions—and many more. Flip chart has presentation notes on reverse panels and is 30 cm x 43 cm.

[43117](#) Flip Chart
[40041](#) Booklet **E**



SILENT DESTRUCTION™: HOW HIGH CHOLESTEROL DESTROYS ARTERIES DISPLAY

This cricket bat-size display proves what you can't see can kill you. Demonstrating how cholesterol can damage artery walls, viewers see how a clean, normal artery can slowly turn into a plaque-encrusted mess, eventually leading to heart disease and heart attack. 62 cm x 9 cm.

[75069](#) Display

Experience more of our heart health products at

HealthEdco.co.uk



THE BASICS OF CHOLESTEROL FOLDING DISPLAY

With eye-catching graphics, this folding display explains what cholesterol is, factors that influence cholesterol levels, differences between "good" and "bad" cholesterol, testing, and how to maintain healthy levels. 111 cm x 57 cm opened.

[79039](#) Folding Display
[79590](#) Carrying Case
[79015](#) Wall Hanger



UPDATED!

HEART DISEASE RISK FACTORS DISPLAY

How low can you go? This interactive display makes calculating one's heart disease risk factors a fun, educational activity. As they tally up both controllable and noncontrollable risk factors, participants slide a bright, red arrow up the scale to determine their risk. 52 cm x 71 cm.

[79027](#) Display



HEART HEALTH EDUCATION PACKAGE

Your dynamic heart health education programme deserves the most innovative visual aids available!

COMPLETE PRESENTATION INCLUDES:

- Facilitator's guide with presentation script, worksheets, activities, quizzes, comprehensive test, and interactive, creative enrichment activities
- Occluded Artery model
- Preventing Cardiovascular Disease folding display
- Death of an Artery easel display
- Cholesterol booklets (50)

79372 Package



NEW!

HIGH BLOOD PRESSURE CONSEQUENCES 3-D DISPLAY

Featuring eight painted, permanently affixed organ models and eye-catching graphics, this 3-D display illustrates the critical importance of managing blood pressure. Comes in self-contained carrying case. 71 cm x 69 cm opened.

78927 3-D Display



HEART HEALTH FOLDING DISPLAYS

Get to the heart of the matter with these two folding displays. What You Should Know About High Blood Pressure describes high blood pressure, explains its consequences, and discusses methods of controlling it. Preventing Cardiovascular Disease explains cardiovascular disease, identifies its risk factors, and provides prevention strategies. 147 cm x 57 cm opened.

- 79347 Cardiovascular Folding Display**
79285 Blood Pressure Folding Display
79590 Carrying Case
79015 Wall Hanger



SEE FOR YOURSELF: BLOOD PRESSURE CHECKS EASEL DISPLAY

Damaged artery models and a cross section of a stroke-affected brain convince viewers of the value of blood pressure checks. Comes with protective fleece cover. 23 cm x 30 cm.

79736 Easel Display

OVERWEIGHT & OBESITY



Child Fat Vest



FAT VESTS

Simulating the look and feel of excess body fat, these vests create the fatiguing, restrictive feeling associated with obesity. Adult vest features images of organs affected by obesity. By inserting five weights into the vest's interior pocket, the user can "gain" up to 20 extra pounds (9 kg). A child version has pictures of popular foods and accommodates five weights that add up to a total of 15 lb (7 kg).

26003 Vest, Adult Size

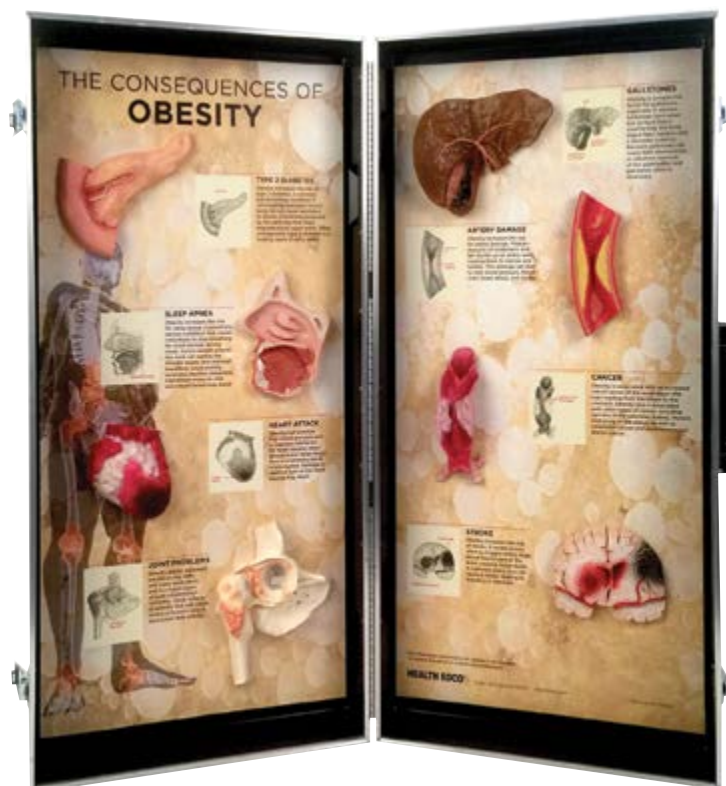
26004 Vest, Child Size

WEIGHED DOWN™ ACTIVITY

Wearing these specially designed 10-cm- and 5-cm-thick pads, pupils find excess body fat can make everyday tasks, such as tying their shoes and getting off the floor, more difficult. Each pad has an adjustable strap. Comes with a guide designed for use with Ages 8–11.

76140 Activity





OBESITY CONSEQUENCES 3-D DISPLAY

From serious problems such as gallstones to life-threatening conditions such as diabetes and cardiovascular disease, the permanently affixed models in this display give a rare glimpse inside a body carrying an unhealthy amount of body fat. Carrying case measures 71 cm x 69 cm opened.

78880 3-D Display

ROLLS OF FAT™ SET

These 1-lb (0.5 kg) and 5-lb (2.3 kg) fat rolls can be wrapped around the mid-section, giving users a quick glimpse of how fat can accumulate. The 1-lb roll is 28 cm long. The 5-lb roll is 74 cm long.

26013 Set
96516 Carrying Case



CALORIE COUNTER DIAL

Providing the caloric content of almost 75 foods, this handy guide tells how many minutes of walking, cycling, dancing, swimming, or running are required to burn those calories. 15 cm x 19 cm.

30233 Dial



HOW TO GAIN 5 POUNDS IN 30 DAYS DISPLAY

Attention-grabbing display shows that, if the calories taken in exceed those burned by 500 each day (about as many as in two soft drinks and a chocolate bar), 5 pounds (2.3 kg) can be gained in just one month! Includes 5-lb Fat Chunk Model, food models representing a chocolate bar and two 355-ml soft drinks, an informative tent card, and a carrying case.

79510 Display



WHAT YOU SHOULD KNOW ABOUT OVERWEIGHT & OBESITY FOLDING DISPLAY

This eye-catching folding display defines overweight and obesity and examines common causes, treatments, and associated health risks. Comes with a 100-sheet Body Mass Index tear pad and a tent card, both of which help viewers determine and classify BMI. 147 cm x 57 cm opened.

79319 Folding Display
79590 Carrying Case
79015 Wall Hanger

DIABETES



UPDATED!

A1C LEVELS: AN INSIDE LOOK™ MODEL

Capture viewers' undivided attention with this clever divided model. One half represents healthy blood glucose and A1C levels by depicting a small number of glucose particles and a red blood cell model that has few glucose particles attached to it. In contrast, the model's other red blood cell contains excess glucose particles and floats through simulated plasma full of glucose particles, representing high A1C and blood glucose levels. Model is 29 cm x 6 cm. Includes informative, bilingual (English/Spanish) tear pad. 100 sheets per pad.

75485 Model

52503 Additional Tear Pad **E**



NEW

MINI A1C™ DIABETES EDUCATION MODEL SET

Explain the A1C test with this pocket-size set. Features two test tubes: One tube depicts a red blood cell with few glucose particles attached to represent healthy A1C, and the other tube depicts a red blood cell with excess glucose particles attached to represent high A1C. Comes with instruction card and case measuring 12 cm x 8 cm x 4 cm.

78920 Model Set

DIABETIC FOOT MODELS

These two versions of the Diabetic Foot Model, cast in durable BIOLIKE 2™, answer the need for realistic models that can be used to discuss diabetic neuropathy, peripheral vascular disease, and skin issues common among people with diabetes. Set includes both Diabetic Foot Model and Severe Diabetic Foot Model. Each model comes with a carrying case and measures approx. 9 cm x 24 cm x 10 cm.

26101

26150

26160

Diabetic Foot Model

Severe Diabetic Foot Model

Set (2)



Back of Information Card

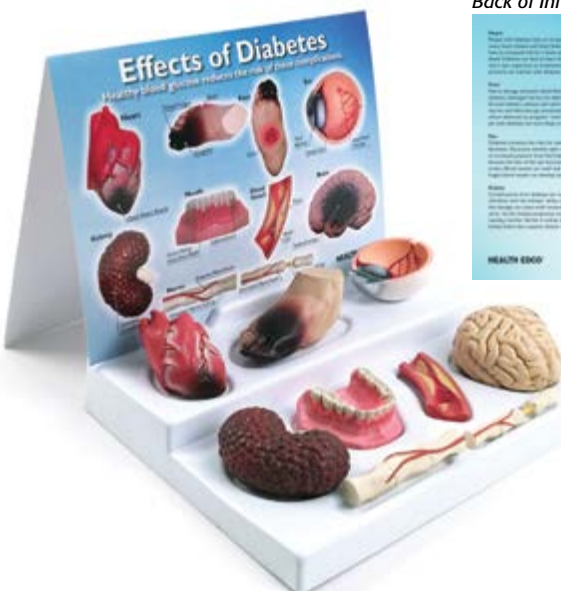


UPDATED!

EFFECTS OF DIABETES DISPLAY

Giving head-to-toe coverage of a growing health problem, this display highlights eight areas commonly affected by diabetes. Features detailed organ replicas. Two-sided information card dispels any misconceptions that diabetes is not a serious disease. 28 cm x 23 cm x 24 cm.

78792 Display



MANAGING DIABETES POP-UP BANNER

Help people with diabetes see the big picture of their role in diabetes management. Emphasises the key steps in managing diabetes. Banner measures 80 cm x 189 cm and breaks down into a 84-cm x 10-cm x 10-cm carrying case.

78944 Banner

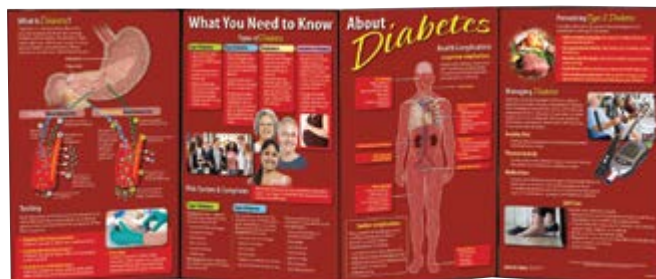




DIABETES CONSEQUENCES 3-D DISPLAY

With eight permanently affixed organ models, this display highlights how diabetes can cause damage throughout the body. Contained within its own carrying case. 71 cm x 69 cm opened.

78878 3-D Display



UPDATED!

WHAT YOU NEED TO KNOW ABOUT DIABETES FOLDING DISPLAY

With easy-to-understand information, this folding display gives a comprehensive overview of the different types of diabetes, as well as diabetes risk factors, symptoms, complications, and management. 147 cm x 57 cm opened.

79302 Folding Display
79590 Carrying Case
79015 Wall Hanger



DIABETES PORTION PLATE

With an attractive design, this plate shows proper portions to help manage diabetes. Dishwasher safe but not intended for microwave use. 24-cm diameter.

50324 Plate

DIABETIC INJECTION MODEL KIT

Practise diabetic injections and finger sticks again and again with these two lifelike and durable models. Skin model can be strapped to a user's arm or leg to simulate a needle injection site. Finger model may be held for lancet practice. Comes with carrying case.

26102 Model Kit
26229 Replacement Skin and Finger



DIABETES EDUCATION PACKAGE

Provide a comprehensive, dynamic presentation about diabetes.

COMPLETE PRESENTATION INCLUDES:

- What You Need to Know About Diabetes folding display offers a general overview.
- Understanding Type 2 Diabetes chart gives a quick "snapshot" of how diabetes affects the body.
- Diabetes booklet (50 included) helps participants understand important points.
- Diabetic Foot Model emphasises the importance of good self-care.

A four-part facilitator's guide contains a presentation script, worksheets, quizzes, and enrichment activities. The programme can be tailored to fit a variety of time formats and different age groups from secondary school through adult.

79370 Package

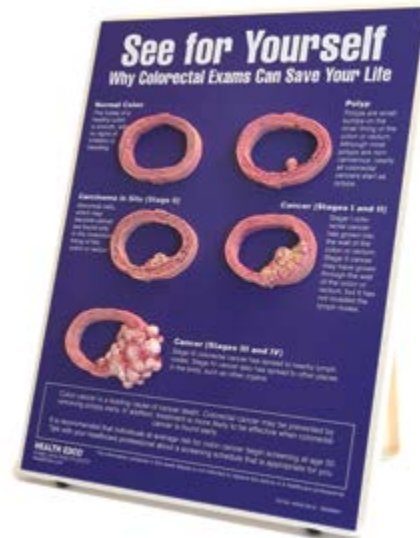
GENERAL HEALTH



DEATH OF A LIVER EASEL DISPLAY

Showing how alcohol abuse and other activities can damage liver tissue, this trio of models details the progression of liver disease. Comes with protective fleece cover. 23 cm x 30 cm.

[79150](#) Easel Display

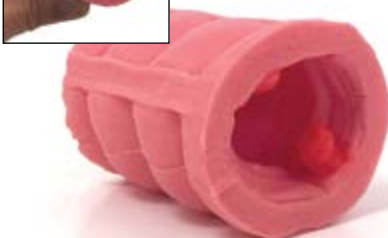


SEE FOR YOURSELF: COLORECTAL EXAMS EASEL DISPLAY

Colon cancer is highly treatable when caught early. This display lays out this simple fact and enhances it with medically accurate cross sections of the colon in varying stages of cancer development. Comes with protective fleece cover. 23 cm x 30 cm.

[79734](#) Easel Display

For our complete line of
health education products,
visit HealthEdco.co.uk



COLORECTAL POLYP MODEL

Use the five polyps and one invasive cancer on this model to explain colon screening and colon cancer. 9 cm long.

[26811](#) Model

ASTHMA EASEL DISPLAY

Explain the breathtaking effects of an asthma attack with these 3-D, handpainted models. Comes with protective fleece cover. 23 cm x 30 cm.

[79740](#) Easel Display





EATING DISORDERS FOLDING DISPLAY

Provide compelling information with this folding display. Lists the warning signs and consequences of eating disorders and addresses treatment. Gives specific information about anorexia, bulimia, and binge eating disorder. 147 cm x 57 cm opened.

79320 Folding Display

79590 Carrying Case

79015 Wall Hanger



LOSS OF A BONE EASEL DISPLAY

Osteoporosis is easy to illustrate with these three handpainted models. The first model represents a normal hip bone, and the second depicts a hip bone that is slowly dying from osteoporosis. The third model shows a hip bone after a fracture. Comes with protective fleece cover. 23 cm x 30 cm.

79143 Easel Display



OSTEOPOROTIC BONE/HEALTHY BONE MODEL

This swivelling comparison model shows just how fragile a bone can become as tissue is lost. One side of the model is solid and dense, whilst the reverse side illustrates the effect osteoporosis has on bone tissue. Model may be removed from its base for closer viewing. 15 cm x 23 cm x 20 cm.

84070 Model

STANDARD HUMAN SEXLESS TORSO MODEL

This reasonably priced torso model offers everything necessary for sound anatomical instruction—without dissecting your budget. Thirteen removable parts include head with open brain and skull, eye with optic nerve, two lung halves, two-part heart, stomach, liver, part of the intestine with appendix flap (two parts), kidney half, bladder half, and torso. 86 cm tall.

[54001](#) Model



BIOLIKE 2™ BRAIN MODEL

Our soft, realistic brain model provokes intelligent conversation on a wide range of subjects, from health to science to anatomy. It also stirs up plenty of thought on the effects of drugs and alcohol, the importance of helmet safety, and the consequences of violence.

[27015](#) Model



BIOLIKE 2™ ANATOMICAL MODELS SET

Help your group understand anatomy like never before. Set of soft, lifelike models of the brain, liver, bladder, and 13 more organs. Comes in carrying case. Models may also be purchased separately. Please call for details.

[27026](#) Set (16)



SOCIAL, EMOTIONAL & BEHAVIOURAL HEALTH



EMOTIONAL HEALTH IN A JAR SET

Open any one of these nine jars, and inside you'll find 101 thought-provoking cards that are great for discussions, writing exercises, or icebreakers.

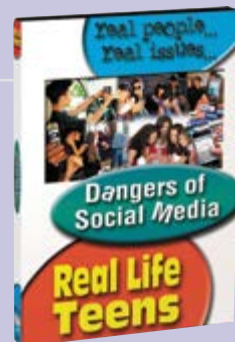
[79890](#) Jar Set (9)

DVD

DANGERS OF SOCIAL MEDIA

Teens gain awareness that, whilst social networking sites can create an open micro-society of friends, they also need to consider the dangers, such as stalking, that can arise by posting detailed personal information. Ages 13–17. 18 minutes.

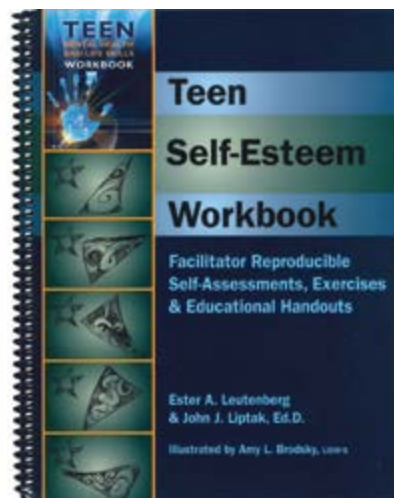
[48828](#) DVD



TEEN STRESS FOLDING DISPLAY

Many young people find themselves being crushed under the weight of adult-size responsibilities. This bright, reassuring folding display lightens the load by offering teens lecture-free suggestions for dealing with stress. Also identifies common causes of stress, describes how the body responds to stress, and explains how stress isn't necessarily always a negative thing. 111 cm x 57 cm opened.

[79048](#) Folding Display
[79590](#) Carrying Case
[79015](#) Wall Hanger



TEEN SELF-ESTEEM WORKBOOK

Designed for facilitators working with young people, this book combines self-assessments, role-playing activities, and more to help teens build positive self-esteem. 126 pages.

[50259](#) Workbook

SUN SAFETY



WHAT YOU SHOULD KNOW ABOUT SKIN CANCER FOLDING DISPLAY

Filled with helpful photographs, this folding display stresses the importance of protecting the skin from harmful UV rays that can cause skin cancer. With emphasis placed on detection and prevention, it also discusses non-melanoma and melanoma cancers as well as causes, risk factors, warning signs, and treatment methods. 147 cm x 57 cm opened.

[79327](#) Folding Display
[79590](#) Carrying Case
[79015](#) Wall Hanger



SKIN CANCER SELF-EXAM DOOR HANGER

This two-sided door hanger explains how to perform a monthly self-exam, lists important warning signs of skin cancer, and features colour photographs that draw distinctions between normal and abnormal moles and skin marks.

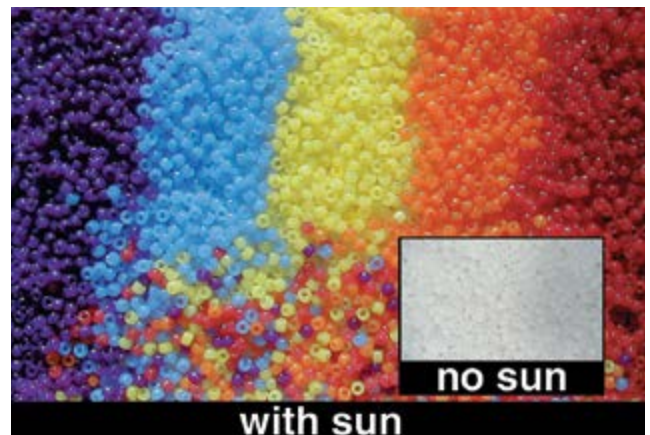
[21244](#) Door Hanger



SKIN CANCER DISK SET

Convenient, portable disk set is ideal for showing the differences among skin lesions, including those that are cancerous. The front of each disk contains visual representations (6 mm and enlarged) of one of five skin lesions (dysplastic nevus, actinic keratosis, malignant melanoma, squamous cell carcinoma, and basal cell carcinoma). The back of each disk contains additional information about each lesion. 10-cm diameter.

[64066](#) Disk Set



UV DETECTING BEADS

Watch these beads change colour as a reminder of the power of the sun. Beads remain pale when indoors or shaded from the sun. Can be strung on rawhide to make necklaces and bracelets. One pack of beads makes about 25 bracelets using 8.23 m of rawhide. Approx. 240 beads per pack in assorted colours.

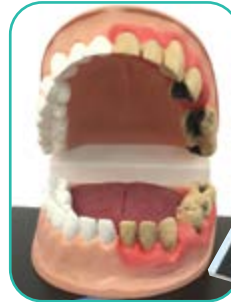
[30183](#) Beads
[30184](#) Rawhide (approx. 23 m)
[78645](#) UV Flashlight

HYGIENE & ORAL HEALTH

MR. CLEAN MOUTH™ MODEL WITH GIANT TOOTHBRUSH

Mr. Clean Mouth's winning smile draws plenty of attention. Perfect for teaching proper brushing and flossing techniques. Soft BIOLIKE 2™ tongue provides added realism. 10 cm x 15 cm x 20 cm.

[79333](#) Model
[79161](#) Carrying Case



UPDATED!

CLEAN MOUTH/DIRTY MOUTH DISPLAY

The clean half of this mouth has healthy teeth and gums. The dirty half has tartar, cavities, gingivitis, and periodontitis. Display also lists steps for keeping teeth healthy. 25 cm x 22 cm x 38 cm.

[79650](#) Display
[79599](#) Carrying Case



Plaque Hunter



PLAQUE HUNTER™ DEMONSTRATION MODEL

Use the Plaque Hunter model to demonstrate the importance of proper brushing and flossing techniques. First, rub invisible simulated plaque over the teeth and gums. After brushing the teeth, shine the included UV flashlight on the model. Any residual plaque illuminates a brilliant electric blue, making the point that thorough brushing—and flossing—is essential. Comes with simulated plaque, toothbrush, UV flashlight, and teaching guide.

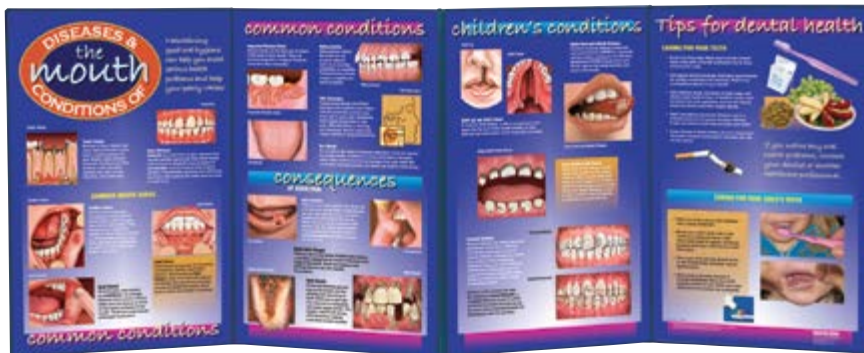
[78953](#) Model



TAKING CARE OF YOUR TEETH FOLDING DISPLAY

Teach children the basics of dental care and why it is so important. Covers brushing, flossing, tooth-healthy snacks, and dental visits. 111 cm x 57 cm opened.

[79004](#) Folding Display
[79590](#) Carrying Case
[79015](#) Wall Hanger



DISEASES & CONDITIONS OF THE MOUTH FOLDING DISPLAY

An abundance of medical illustrations helps viewers get a clear understanding of a number of oral health conditions. Covers common problems, such as gum disease and mouth sores; conditions associated with addiction, such as oral cancers and meth mouth; and children's conditions, such as baby bottle tooth decay. 147 cm x 57 cm opened.

- [79277](#) Folding Display
- [79590](#) Carrying Case
- [79015](#) Wall Hanger

For our complete line of
health education products,
visit HealthEdco.co.uk



SNEEZY SAM™ DISPLAY

This delightfully disgusting display teaches viewers that a sneeze can travel farther than they think. A quick squeeze on the concealed bulb behind Sam's head sends a blast of harmless water spraying out of his "mouth", reminding damp bystanders to cover their sneezes. 30 cm x 48 cm x 22 cm.

- [79872](#) Display



GERM POWDER™

HEALTH EDCO Germ Powder is available in 227-g containers and comes with teaching suggestions that promote handwashing success. The kit includes a container of Germ Powder and a UV flashlight.

- [79760](#) Kit
- [79705](#) Powder
- [78645](#) UV Light



BAG OF GERMS™

This product proves that Mum was right—handling everyday objects is a surefire way to pick up nasty germs. Each Bag of Germs has a replaceable pouch of Germ Powder™ contained within a special bag that deposits the fluorescent powder on users' hands. Set includes Bag of Germs, UV flashlight, and carrying case. Bag of Germs measures 27 cm x 18 cm.

- [79785](#) Set
- [79782](#) Bag of Germs Replacement Pouch

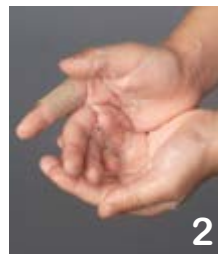
Step 1 Sprinkle powder on hands, or pat the Bag of Germs. You may also put powder on common objects, such as doorknobs, and then touch those surfaces.

Step 2 Wash hands and/or surfaces.

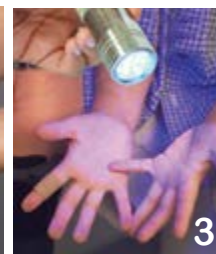
Step 3 Use UV light to see simulated "germs" glowing in the dark, proving just how thoroughly one must wash to eliminate germs.



1



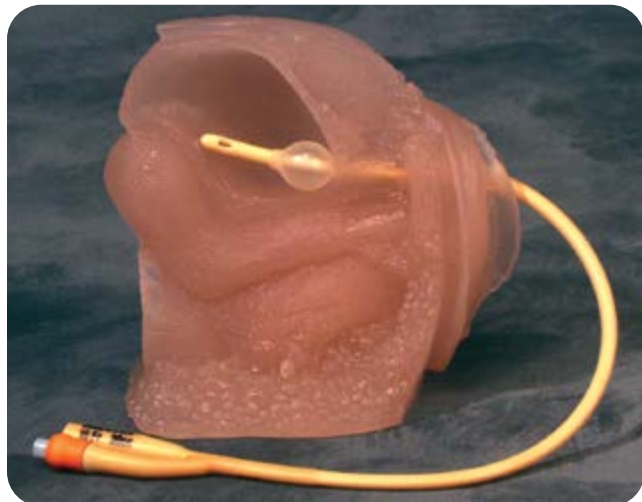
2



3



TRAINING MODELS



CATHETER MODELS

Designed for training the proper insertion of a urinary catheter, these outstanding BIOLIKE 2™ models feature a viscoelastic urethra that accurately duplicates the feeling of inserting a lubricated catheter into the bladder. Comes with a carrying case and lubricant. Female model measures 15 cm x 15 cm x 10 cm; male model measures 23 cm x 15 cm x 10 cm. Catheters not included.

[26109](#) Model Set (2)

[26104](#) Male Model

[26108](#) Female Model



OSTOMY CARE MODEL

Our soft BIOLIKE 2™ model features four stomas that can be irrigated with a catheter, washed, bandaged, and fitted with ostomy bags. Comes with lubricant, a draping sheet, and a carrying case measuring 31 cm x 23 cm x 13 cm.

[26130](#) Model

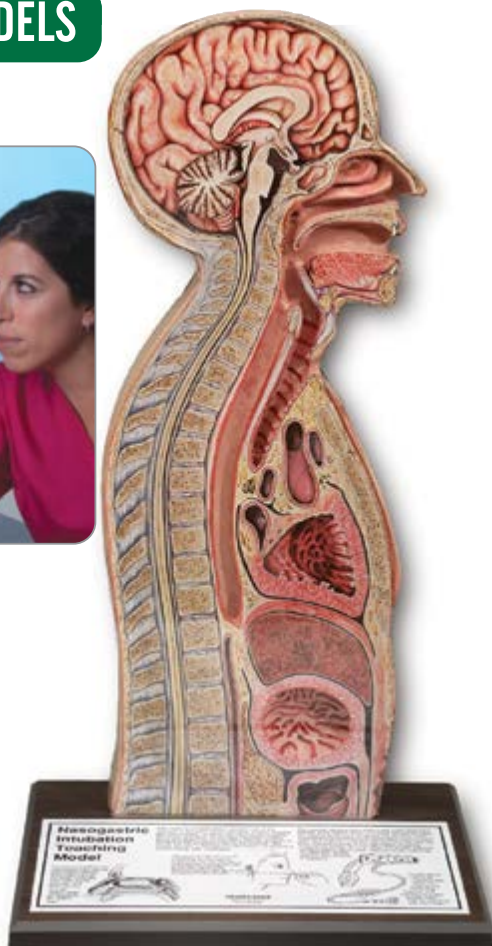
INJECTION TEACHING MODEL

Made of durable BIOLIKE 2™, this model allows users to practise intradermal, subcutaneous, and intramuscular injections repeatedly. Cannot be injected with liquids. Comes with carrying case. 15 cm x 12 cm x 4 cm.

[26200](#) Model



TRAINING MODELS



NASOGASTRIC INTUBATION MODEL

A 3-cm-deep modelled cast of the nose, mouth, pharynx, trachea, oesophagus, and stomach is covered with Plexiglas so viewers can observe various procedures. Plastic feeding tubes or catheters, not included, may be passed through the nose or mouth into the oesophagus or stomach. Also features tracheostoma for endotracheal aspiration. 30 cm x 58 cm x 23 cm.

[84087](#) Model

TB TESTING ARM SETS

Our outstanding Deluxe TB Testing Arm models are made of soft, palpable material for students to practise feeling for and measuring skin indurations. One beige model and the brown model feature variations in skin colour typically occurring around test sites. A second beige model lacks the appearance of erythema. Our Standard TB Testing Arm Set includes one beige and one brown model with TB reactions in various sizes and pigmentations. Each model in each set is 8 cm x 17 cm x 3 cm.

[26620](#) Deluxe Set
[26593](#) Standard Set



PRESSURE SORE CARE MODEL

Featuring varying stages of pressure sores, this BIOLIKE 2™ model can be washed, treated with most antiseptics and medicines, and dressed just like real flesh. Includes carrying case. 37 cm x 24 cm x 9 cm.

<https://www.healthedco.co.uk/26828-Pressure-Sore-Care-Model> Model



26593



26620



DELUXE VENOUS-ACCESS DEVICE MODEL

This model, which offers left and right subclavian catheter connections and an implanted Port-a-Cath device, provides a quality training experience. Catheters may be flushed with water, the model can be washed with soap and water, and non-staining antiseptics may be applied. Mounted on collapsible easel. Comes with carrying case. 47 cm x 33 cm x 13 cm.

[26124](#) Model
[26128](#) Replacement Door



INJECTION TRAINING HAND MODEL

With palpable veins, amazing skin texture, and lifelike flexibility, this BIOLIKE 2™ model provides highly realistic training in venepuncture. Can be injected with air and water. 11 cm x 25 cm.

[26240](#) Model

For our complete line of
 health education products,
 visit HealthEdco.co.uk



INJECTION TRAINING ARM MODEL

The Injection Training Arm features lifelike latex skin and palpable veins that may be injected with a syringe or IV drip at the antecubital fossa, forearm, and back of the hand. The skin will stand up to multiple needle sticks and can easily be washed with soap and water. Comes with carrying case measuring 46 cm x 14 cm x 32 cm.

[26320](#) Model
[26322](#) Replacement Skin
[54629](#) Replacement Veins

MEN'S HEALTH



TSE MODELS

Increase the effectiveness of your testicular self-examination demonstrations with this durable TrueForm™ model. Designed for an authentic representation of how testicles feel inside the skin of the scrotum. Comes with carrying case. 8 cm x 9 cm x 5 cm.

AVAILABLE IN TWO VERSIONS:

- Two palpable lumps in one testicle and none in the other
- Two palpable lumps in each testicle

Model

- 26406** Beige (two lumps in one testicle)
- 26406E** Brown (two lumps in one testicle)
- 26412** Translucent (two lumps in one testicle)
- 26400** Beige (two lumps in each testicle)
- 26400E** Brown (two lumps in each testicle)
- 26408** Translucent (two lumps in each testicle)



MEN'S BREAST CANCER AWARENESS MODEL

This anatomically correct model is perfect for male breast self-exam. Features two palpable lumps concealed between a soft BIOLIKE 2™ outer skin layer and a rigid, underlying layer of muscle. 15 cm x 6 cm x 15 cm.

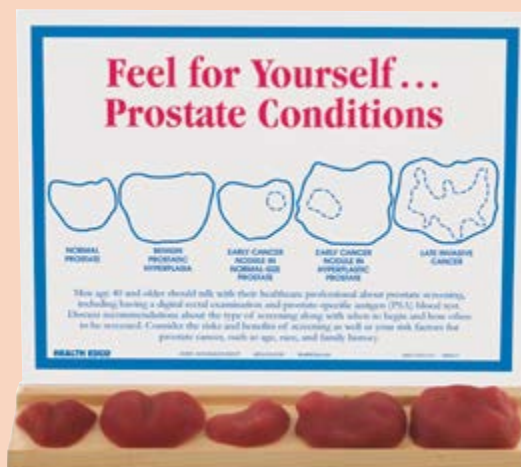
26470 Model



MINI-TESTICLE SHOWER CARD

Teach the basics of testicular self-examination. Model contains one lump, and card provides detailed TSE instructions.

23008 Shower Card



FEEL FOR YOURSELF: PROSTATE CONDITIONS DISPLAY

Provide evidence men can see and feel to explain why their healthcare professionals may recommend prostate screening. Five soft BIOLIKE 2™ models show the differences among normal, benign hyperplastic, and cancerous prostates. 28 cm x 22 cm.

26807 Display



TESTICULAR CANCER: WHAT YOU NEED TO KNOW PAMPHLET

Geared toward young men, this informative leaflet uses straightforward language and graphics to teach the importance of regular testicular self-examination. Includes TSE instructions and possible warning signs. 8 panels.

[38104](#) Pamphlet **E**



TSE MINI POCKET GUIDE

Give men the information they need to perform testicular self-examination correctly every month. Minimum order is 50.

[37005](#) Mini Pocket Guide **E**



NONSEXUAL BSE/TSE MODEL

Emphasise the importance of self-examination without models that can potentially cause embarrassment. Features simulated breast and scrotal tissue moulded in generic shapes. Both contain lumps that can be found with proper self-examination techniques. 34 cm x 23 cm x 5 cm.

[26420](#) Model



9 cm x 27 cm

BREAST SELF-EXAMINATION/TESTICULAR SELF-EXAMINATION SHOWER CARDS

Provide both BSE and TSE instructions with one card. Feature BSE instructions (vertical or circular pattern) for women on one side and TSE instructions for men on the other side.

Shower Card

[23022](#) Vertical

[23021](#) Circular

TEEN BSE/TSE MODEL KIT

Use this Teen BSE Model containing lumps of various sizes and TSE Model with lumps in each testicle to teach the importance of the early detection of cancer. Comes with carrying case.

[26495](#) Model Kit, Beige

[26496](#) Model Kit, Brown



WOMEN'S HEALTH



MULTI-TYPE BSE MODEL

Stressing breast self-exam, mammography, and clinical exams, this interactive display features three BIOLIKE 2™ models: one resembling normal tissue, one simulating a fibrocystic condition, and one with both palpable and non-palpable lumps. Includes English/Spanish display backgrounds, presentation notes, and carrying case. 34 cm x 29 cm x 37 cm.

[26426](#) Model, Beige

[26427](#) Model, Brown

STANDARD BSE MODEL

This soft BIOLIKE 2™ model mimics the feel of real tissue and features palpable lumps that teach fingers how to locate potential abnormalities. Model's non-palpable lumps can be seen with a penlight only, underscoring the importance of mammography. Comes with case and penlight.

[26500](#) Model, Beige

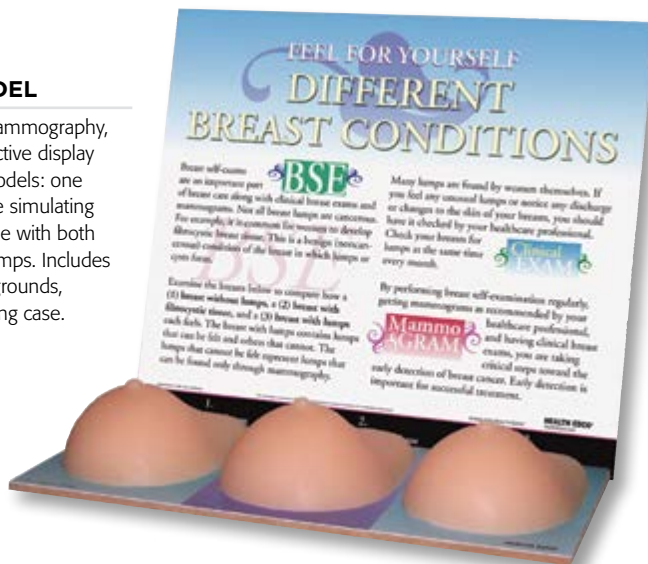
[26503](#) Model, Brown



STANDARD BSE MODEL KIT

Perfect for promoting breast self-awareness, this kit contains one beige and one brown BIOLIKE 2™ breast model. Both contain palpable lumps and lumps that can be found only by illuminating them with the included penlight, emphasising mammography. Also comes with carrying case.

[26550](#) Kit



INTERCHANGEABLE NODULES BSE MODEL

Train women to find different-sized breast lumps. Each of the five nodules (ranging in size from 1/2 cm to 4 cm) can be placed into the model from the back. Comes with slipcover, carrying case, and extra set of nodules.

[26504](#) Model

ABC CUP BSE MODEL SET

Tailor your BSE and breast self-awareness training to a variety of women with these BIOLIKE 2™ models. Approximate A, B, and C cup-size breasts. Each model contains palpable and non-palpable lumps. Includes three breast models, carrying case, penlight, and lump location key.

[26540](#) Model Set, Beige





MINI-BREAST™ SHOWER CARDS

Promote BSE and mammography with these shower cards. Each card explains the basic BSE method and the circular pattern. Each also has an attached Mini-Breast that is available in different colours and features one lump that can be felt and one that cannot.

Circular

[23036](#) Pink
[23014](#) Beige
[23014E](#) Brown



CONCERN MINI-BREAST™ MODEL

A powerful message in a small package, these tiny breast models promote BSE and mammography by containing one lump that can be felt and one that cannot. Models are individually boxed.

[26903](#) Beige
[26903E](#) Brown
[26912](#) Translucent Blue
[26915](#) Pink



NEW!

DELUXE BREAST SELF-EXAM MODEL

Created with durability and realism in mind, our deluxe BSE model is perfect to teach breast self-awareness for the early detection of breast cancer. Made of lifelike synthetic tissue, the model is designed for use with the included beige and brown slipcovers, allowing it to withstand long-term use. Features palpable and non-palpable lumps. Comes with English/Spanish presentation notes and carrying case.

[78507](#) Model

GROUP BSE MODEL

Provide group or individual training in BSE and breast self-awareness. Compare one side that contains lumps in the breast and underarm tissue with the other side that has no lumps. Mounted on a collapsible easel and comes with carrying case. 43 cm x 29 cm x 22 cm.

[26547](#) Model, Beige
[26548](#) Model, Brown



BREASTOLOGY BAG™ TRAINING MODEL

Use the six soft-sculpture breast models in this handy tote bag to promote early detection of breast cancer. Helpful in training women how to feel for lumps and to understand the differences among normal tissue, fibrocystic tissue, and breast lumps. Each model has instructions printed on the back and is 18-cm diameter.

[54102](#) Training Model



UPDATED!

WHAT YOU SHOULD KNOW ABOUT BREAST CARE FOLDING DISPLAY

Provide detailed information about breast care with this folding display. Discusses cancerous and noncancerous breast conditions. Also covers risk factors, warning signs, breast cancer screening, and more. 147 cm x 57 cm opened.

[79308](#) Folding Display

[79590](#) Carrying Case

[79015](#) Wall Hanger

SEE FOR YOURSELF: MAMMOGRAPHY EASEL DISPLAY

Using seeds and fruits for comparison, this display shows the difference BSE and mammography can make in the early detection of breast cancer. Comes with protective fleece cover. 23 cm x 30 cm.

[79732](#) Easel Display



BREAST CANCER AWARENESS NECKLACE KIT

The wooden beads of this necklace represent the average size of breast lumps typically found by women not trained at BSE, by those who occasionally practise BSE, by those who regularly practise BSE, by a clinical breast exam, by a first mammogram, and by regular mammograms. Includes beads, string, and an instruction card.

[23341](#) Necklace Kit



SEE FOR YOURSELF: PAP TESTS EASEL DISPLAY

Promote the importance of Pap tests with these handpainted cervix models. Models depict a normal cervix, a cervix with a benign tumour, and cervixes with cancer. Comes with protective fleece cover. 23 cm x 30 cm.

[79733](#) Easel Display



BREAST CARE

This booklet and flip chart present comprehensive information about breast care in an easy-to-understand format. Promotes a combination of BSE, mammography, and clinical exams. Six-panel, bilingual flip chart (30 cm x 43 cm) features English on one side, Spanish on the other. Comes with presentation notes. Booklet is 16 pages.

[43108](#) Flip Chart, Bilingual

[40001](#) UPDATED! Booklet E



SEX & RELATIONSHIPS EDUCATION

DELUXE CONDOM TRAINING MODEL

This BIOLIKE 2™ model makes demonstrating proper condom use simple. UV light-sensitive fluid, which illuminates under a UV flashlight, helps explain the importance of avoiding contact with body fluids. Comes with syringe, fluid, latex condoms, and carrying case. 13 cm x 24 cm x 13 cm.

26403 Model, Beige
26402 Model, Brown
78645 UV Flashlight



FEMALE CONTRACEPTIVE MODEL

Demonstrate proper insertion of contraceptives, such as female condoms, diaphragms, cervical caps, and spermicides. This soft BIOLIKE 2™ model has a cutaway section that helps users assess their technique. Includes carrying case and lubricant. Contraceptives not included. 9 cm x 14 cm x 14 cm.

26110 Model



FEMALE PELVIS CONTRACEPTIVE MODEL

Learning to properly insert a female condom, diaphragm, cervical cap, contraceptive sponge, or spermicide is simplified with this BIOLIKE 2™ model. A small cutaway window helps users see whether the cervix is adequately covered. Contraceptives not included. 11 cm x 6 cm x 8 cm.

26462 Model



For our complete line of sex education products,
visit HealthEdco.co.uk

ECONOMY CONDOM TRAINING MODEL

Economically demonstrate safer-sex practices. Model "ejaculates" UV light-sensitive fluid to demonstrate the importance of correct condom use. Comes with syringe, UV light-sensitive fluid, and six latex condoms. 6 cm x 14 cm x 6 cm.

27006 Model
78645 UV Flashlight

UPDATED!

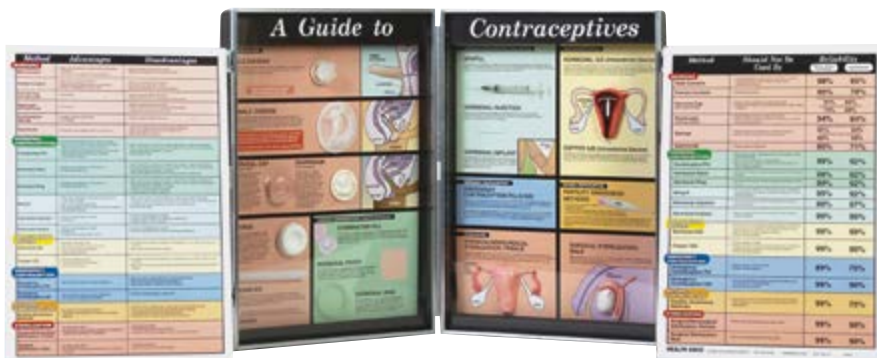
CONTRACEPTIVE AWARENESS GUIDE

Framed chart covers a wide range of contraceptive options and lists advantages, disadvantages, and reliability of each method. Display includes easel for tabletop display or can be mounted on a wall. Laminated chart also available. 91 cm x 61 cm.

79221 Display
90721 Chart

Method	Typical Use Effectiveness (%)	Perfect Use Effectiveness (%)
Abstinence	98%	98%
Coitus Interruptus	96%	96%
Condom (Male)	98%	98%
Condom (Female)	98%	98%
Diaphragm	92%	92%
Cervical Cap	91%	91%
Spermicide	91%	91%
Contraceptive Sponge	91%	91%
Injectable	99%	99%
Implant	99%	99%
Uterine Device	99%	99%
Contraceptive Patch	99%	99%
Contraceptive Ring	99%	99%
Contraceptive Pill	99%	99%
Emergency Contraception	95%	95%
Permanent Sterilization (Male)	99%	99%
Permanent Sterilization (Female)	99%	99%

SEX & RELATIONSHIPS EDUCATION



A GUIDE TO CONTRACEPTIVES KIT

Kit uses 3-D models to present a wide variety of contraceptive methods. Provides summary of the pros, cons, and reliability of each contraceptive. Includes two stand-alone panels and informative handout. Case has a Plexiglas cover and is 74 cm x 51 cm opened.

79256 Kit



COMPACT CONTRACEPTION DEMO KIT MADE IN UK

Knowledge is the key to pregnancy prevention, and this kit helps you teach about male and female condoms, diaphragms, implants, contraceptive pills, patches, IUDs, IUSs, and more. Includes facsimile contraceptives and laminated pictures. Age 11–Adult.

84000 Kit



PAP TESTS, CERVICAL CANCER, AND HPV FOLDING DISPLAY

Inform women about how regular Pap and HPV tests can save lives. Discusses abnormal Pap test results, the role of HPV in causing cervical cancer, how HPV is spread, and HPV vaccination. 147 cm x 57 cm opened.

79311 Folding Display
79590 Carrying Case
79015 Wall Hanger

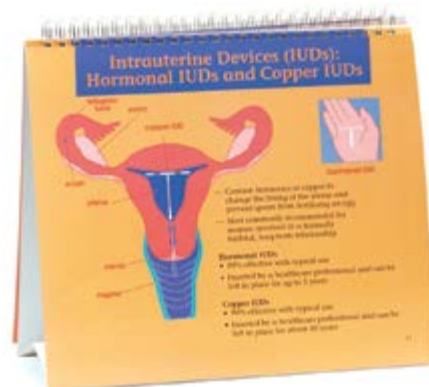


UPDATED!

WHEEL OF CHOICES GAME

Spin the wheel and answer questions about anatomy, sexual myths, pregnancy, and other categories. The healthy or unhealthy category gets young people to consider what makes a healthy dating relationship. Includes game cards and teacher's guide. Can be played individually or in teams. Ages 12–17. 52 cm x 71 cm.

79122 Game



UNDERSTANDING BIRTH CONTROL FLIP CHART

With its bold, simple illustrations, this flip chart helps viewers make confident, informed choices. Discusses male and female reproductive anatomy, menstruation, conception, and methods of contraception. Each of the 21 panels has presentation notes on the reverse side. 36 cm x 30 cm.

43325 Flip Chart



THE CONSEQUENCES OF STDs 3-D DISPLAY

From ectopic pregnancy to cervical cancer, the eight models in this display prove to viewers that sexually transmitted infections can have serious consequences. Display comes in self-contained carrying case. 71 cm x 69 cm opened.

[79634](#) 3-D Display



SEX & CONSEQUENCES GAME

This fast-paced game lays out the cold facts about STIs, pregnancy, and sexual activity, helping players form smart strategies. Includes game board, spinner, 24 dilemma cards, 72 question cards, and more. For 2–8 players or teams. Age 12–Adult.

[79270](#) Game



STD ROULETTE GAME

Promoting common-sense decision-making, this wheel highlights common STIs, and accompanying game cards present real-life scenarios that address different sexual situations. Comes with presentation notes. 52 cm x 71 cm.

[79195](#) Game

UPDATED!

SEXUALLY TRANSMITTED DISEASES FLIP CHART

With straightforward facts, this flip chart covers common STIs, including HIV/AIDS, syphilis, gonorrhoea, herpes, hepatitis B, and HPV, and how to avoid them. Six-panel flip chart has presentation notes on the backside of each panel. 30 cm x 43 cm.

[43162](#) Flip Chart



WHAT YOU SHOULD KNOW ABOUT STDs FOLDING DISPLAY

Expose the reality of STIs and the damage they can do. Display provides detailed information about major STIs. Also covers prevention, the importance of testing and treatment, and STIs during pregnancy. 147 cm x 57 cm opened.

[79087](#) Folding Display

[79590](#) Carrying Case

[79015](#) Wall Hanger



THE POTENTIAL DANGERS OF ORAL SEX 3-D DISPLAY

Amplified by vivid descriptions of herpes, syphilis, gonorrhoea, and HPV, the models on this display challenge viewers to consider the health risks of oral sex. Comes in a self-contained carrying case. 37 cm x 53 cm x 36 cm opened.

[79633](#) 3-D Display

SEX & RELATIONSHIPS EDUCATION



THE CONSEQUENCES OF HIV/AIDS 3-D DISPLAY

These eight handpainted models reveal some of the devastating consequences of advanced HIV infection, including a lung eaten up by tuberculosis, a bone attacked by infection, and more. Serves as a reminder that complacency can be deadly. Comes in a self-contained carrying case. 71 cm x 69 cm opened.

[79647](#) 3-D Display

UPDATED!

HIV/AIDS FLIP CHART

Engage your audience with a basic understanding of HIV/AIDS. Flip chart explains HIV/AIDS, its symptoms, transmission, and how to help avoid infection. Features presentation notes on back of each panel. 6 panels. 30 cm x 43 cm.

[43104](#) Flip Chart



UPDATED!

WHAT YOU SHOULD KNOW ABOUT HIV/AIDS FOLDING DISPLAY

Focusing on HIV prevention and managing HIV infection, this folding display teaches the facts about HIV. Includes information about HIV transmission and testing, pre- and post-exposure prophylaxis, and more. 147 cm x 57 cm opened.

[79084](#) Folding Display

[79590](#) Carrying Case

[79015](#) Wall Hanger



UPDATED!

HIV/AIDS: DEATH OF AN IMMUNE SYSTEM EASEL DISPLAY

Show your group how HIV attacks the body's immune system with the 3-D, handpainted models on this display. Covers how a healthy immune system functions and how HIV works to weaken that system. Comes with wire easel. 30 cm x 23 cm.

[79180](#) Easel Display



YOUR NEW BODY FOLDING DISPLAYS

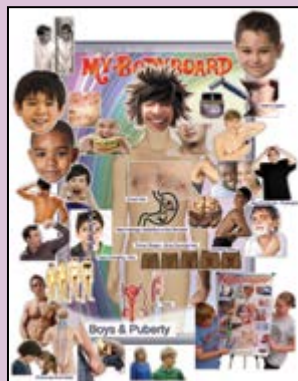
With sensitivity and reassurance, each of these folding displays carefully addresses the physical and emotional changes associated with puberty. Displays measure 147 cm x 57 cm opened.

[79329](#) Girls Folding Display

[79328](#) Boys Folding Display

[79590](#) Carrying Case

[79015](#) Wall Hanger



Boys



Girls

MY BODYBOARD COMPLETE PUBERTY SET MADE IN UK

The changes of puberty may be an awkward subject for young people to discuss, but the colourful My BodyBoard Complete Puberty Set gives the topic magnetic appeal. The Complete Puberty Set includes one professional-size board as well as a Boys Magnetic Puberty Pack and a Girls Magnetic Puberty Pack. Each magnetic pack has more than 40 picture magnets and 30 text description magnets that depict the changes associated with puberty in either boys or girls. Packs come with lesson plans. Board is 60 cm x 90 cm.

[30318](#) Complete Professional Set

PREGNANCY

UPDATED!

WITH CHILD™ LIFE-SIZE DISPLAY

The overlapping images in this life-size, standing display show the childbearing cycle from preconception planning through 6 weeks postpartum. 46 cm x 61 cm.

43319 Life-Size Display



WITH CHILD™ LARGE-SIZE SPIRAL-BOUND CHARTS

An illustrated, comprehensive, award-winning childbirth education programme that covers more than 100 childbearing topics, this effective learning tool stimulates class discussion and provides an overview of the essential issues that surround each topic. 24 pages. 55 cm x 43 cm.

43313 Spiral-Bound Charts



UPDATED!

WITH CHILD™ DESK VERSION

From preconception planning to early parenting, this indispensable childbirth education tool covers a full range of childbearing topics and beautifully illustrates the changes of pregnancy.

43317 Desk Version

WITH CHILD™ SIMULATOR

Wearing the With Child™ Simulator creates empathy for the unique physical challenges of being pregnant—excellent for expectant fathers in childbirth education classes or teens in pregnancy prevention programmes. While wearing the With Child™ Simulator, the physical discomforts of pregnancy that are experienced firsthand include:

- Weight Gain of Approx. 25 lb (11.3 kg)
- Abdominal Distention
- Pelvic Tilt
- Shift in Posture Causing Waddling Gait
- Abdominal Aches
- Lower Back Stress
- Inability to Get Comfortable
- Pressure on Bladder, Stomach, & Lungs
- Shortness of Breath
- Difficulty Rising From Chair or Bed
- Increased Breast Size
- Rise in Body Temperature
- Increased Blood Pressure & Pulse
- Foetal Movement
- Decreased Mobility



- Limited Breathing
- Tiredness

The With Child™ Simulator requires minimal assembly and is designed to work on wearers of varying heights and sizes. An easy-to-use presentation guide provides teaching notes, engaging activities, usage suggestions, and care instructions.

Each With Child™ Simulator comes with the following:

- 1 Pregnancy Simulation Torso
- 1 Tunic (to wear over simulation torso)
- 1 Timeline of Pregnancy Chart
- 1 Presentation Guide
- 50 Comfort Measures in Pregnancy Booklets
- 1 Wheeled Carrying Case

54427 Simulator

WITH CHILD™ PREGNANCY CALCULATOR

Help expectant parents calculate their estimated due date with this movable wheel. Includes information about key stages of foetal development and essential antenatal care guidelines. 17 cm x 22 cm.

43341 Calculator



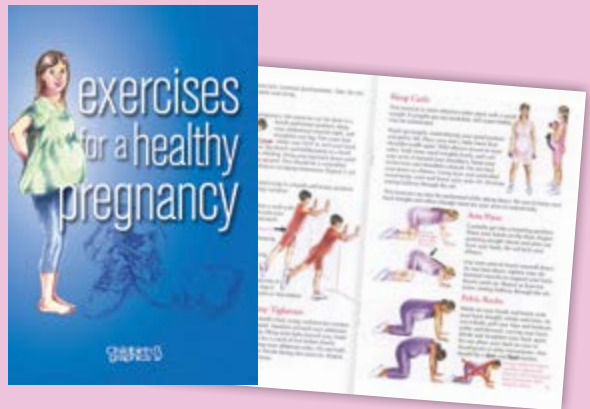
PREGNANCY



"FOUR" TRIMESTERS OF CHILDBEARING CHART SET

Full-colour charts with grommets for easy hanging trace foetal development and maternal changes during pregnancy. Also covers the "fourth" trimester of postpartum adjustment. Each of the four charts is laminated and measures 48 cm x 64 cm.

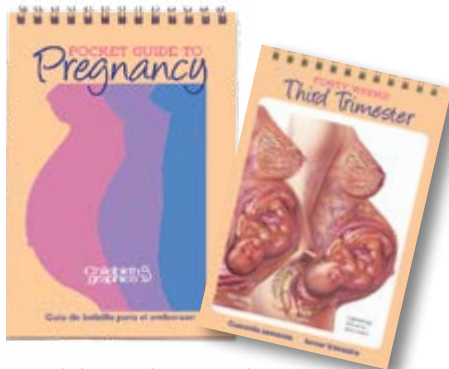
90649 Chart Set (4)



EXERCISES FOR A HEALTHY PREGNANCY BOOKLET

Outlines effective exercises for mums-to-be with detailed illustrations. Warm-up, strengthening, and stretching movements are included as well as a special section on postpartum exercises. Ideal for all levels of ability. 16 pages.

40401 Booklet E



POCKET GUIDE TO PREGNANCY

Featuring art from With Child, the front panels of this guide illustrate the stages a woman's body goes through during pregnancy. The back panels illustrate conception, implantation, and more. Bilingual English/Spanish. 8 panels. 11 cm x 17 cm.

38501 Pocket Guide E



FETAL MOVEMENT COUNTS TEAR PAD

Teach expectant mums how to do foetal movement counts and when to contact a healthcare professional. English on one side and Spanish on the other. 100 sheets per pad.

52509 Tear Pad E

SIGNS OF PRETERM LABOR TEAR PAD

Give pregnant women potentially life-saving information. Defines what preterm labour is, explains the warning signs, and emphasises a healthy lifestyle during pregnancy. English on one side and Spanish on the other. 100 sheets per pad.

52515 Tear Pad E





UTERUS/FOETUS MODEL SET

Using our lifelike BIOLIKE 2™ material, this model set dynamically shows the development of the foetus and uterus at 8, 10, 16, 22, and 40 weeks. Foetuses can be held separately from the uteruses. Carrying bag available separately.

27007 Model Set
96522 Carrying Bag

FOETUS MODEL SET

Expectant mothers can easily visualise their little ones growing inside them when they hold these lifelike models, which represent 12-, 16-, 22-, and 30-week babies. Comes with case that measures 34 cm x 14 cm x 15 cm.

79867 Model Set (4)

Represents development at 12, 16, 22, and 30 weeks



UPDATED!

TIMELINE OF PREGNANCY

Taken from our popular With Child series, this informative chart and tear pad illustrate foetal development and parallel maternal uterine growth across 40 weeks of pregnancy. Tear pad also features a chart on the back to calculate an estimated due date. Chart is laminated, measures 61 cm x 46 cm, and is bilingual English/Spanish. Tear pad has 100 sheets per pad.

90823 Chart
52536 Tear Pad E

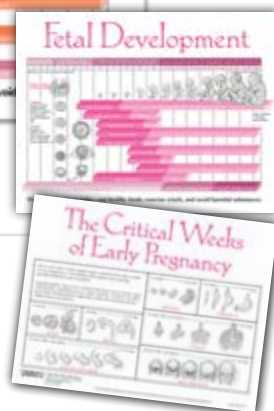


UPDATED!

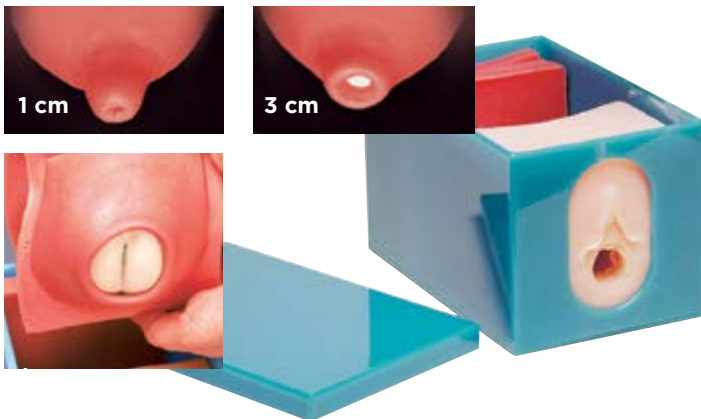
FETAL DEVELOPMENT

Follow those important moments from conception to birth. Colourful, laminated chart measures 61 cm x 46 cm. Two-sided tear pad illustrates critical organ development during the early weeks of pregnancy. 100 sheets per pad.

90821 Chart
52554 Tear Pad E



LABOUR & BIRTH



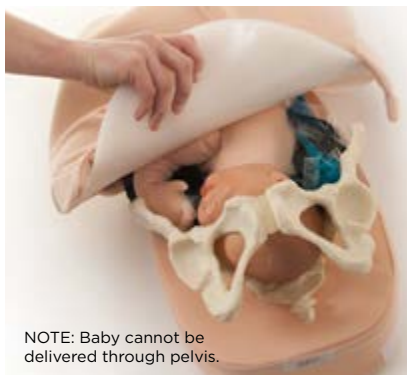
FOETAL MONITORING AND LABOUR PROGRESS MODEL SET

Provide realistic simulation for vaginal examinations, labour progress, assessment of dilation, palpation of foetal fontanelles and suture lines, and assessment of the position of the vertex. Includes a foetal head, lower uterine segment, foetal buttocks for breech presentation, and four interchangeable cervical dilation models (1, 3, 4, and 8 cm). Components fit into a durable plastic case. Comes with lubricant, instructions, and carrying case. 14 cm x 13 cm x 22 cm.

[79851](#) Model Set

ABDOMINAL PALPATION MODEL SET

Use this great 3-D teaching tool to perform Leopold's manoeuvres and to demonstrate palpation of the abdomen to determine foetal lie, presentation, and position. The Abdominal Palpation Model includes a foetal model with firm buttocks. The foetus and included vinyl pelvis rest within the abdominal portion of the model. The abdomen, a padded cloth attached by Velcro to the base, makes it easy to visualise and change foetal positions. Comes with a BIOLIKE 2™ gel pad that provides added cushion over the foetus for a more realistic feel, movable gel packs to simulate amniotic fluid, and a practice guide. Model Set includes model, extra movable gel packs to simulate amniotic fluid, and a carrying bag. Model is 48 cm x 29 cm x 24 cm.



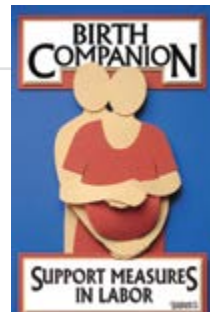
[78936](#) Model Set
[79820](#) Model
[79862](#) Replacement Gel Pad
[98726](#) Carrying Bag



BIRTH COMPANION BOOKLET

Inform and encourage parents with instant visual reminders of labour comfort methods. Illustrations in the booklet coordinate with the Essential Labour and Birth Charts (see page 57). 16 pages.

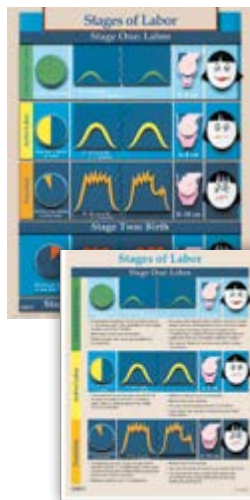
[38525](#) Booklet E



STAGES OF LABOR TEAR PAD AND CHART

Display the Stages of Labor chart or hand out its contents in tear pad format. Tear pad is two-sided and contains 100 sheets per pad. Laminated chart (56 cm x 71 cm) includes a black-and-white Spanish version on the back.

[52736](#) Tear Pad E
[90620](#) Chart



POSITIONS FOR LABORING OUT OF BED

Demonstrating the positions that allow women to labour out of bed for as long as possible, this chart and tear pad show women working alone as well as with support people. Laminated chart is 58 cm x 89 cm. Tear pad is English on one side and Spanish on the other and has 100 sheets per pad.

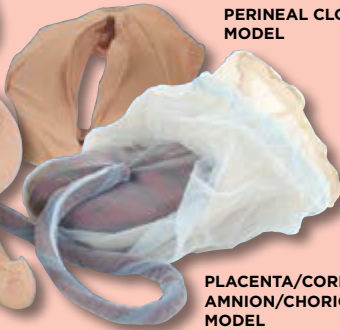
[90673](#) Chart
[52560](#) UPDATED! Tear Pad E



childbirth model sets



FOETAL MODEL



PERINEAL CLOTH MODEL

PLACENTA/CORD/AMNION/CHORION MODEL

EDUCATOR ESSENTIALS

With these essential models (sold separately or with the model sets shown below), you can easily demonstrate the birth process. The 48-cm-long Foetal Model represents an average-sized, full-term baby. The body flexes to show all presentations and positions, and the head has palpable anterior and posterior fontanelles. The Perineal Cloth Model (13 cm x 17 cm) is perfect to demonstrate the stretching of the perineum, possible episiotomy, and the emergence of the foetal head. The Placenta/Cord/Amnion/Chorion Model allows the Foetal Model to be shown inside a simulated amniotic sac. The snap-on cord clearly reveals the vein and arteries, and a convenient drawstring closes the sac. The amniotic and chorionic membranes are accurately detailed in two colours. The placenta measures 18 cm x 20 cm.

[79814](#)

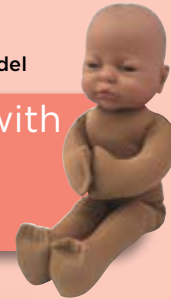
Foetal Model

[79804](#)

Perineal Cloth Model

[79807](#)

Placenta/Cord/Amnion/Chorion Model



Foetal Models and Model Sets with Diverse Skin Tone Options Available Online!



CHILDBIRTH MODEL SET

Shown in accurate detail, the Female Pelvis Model measures 27 cm x 18 cm x 19 cm and can accommodate the head of the Foetal Model. Complete Childbirth Model Set includes a Foetal Model, Placenta/Cord/Amnion/Chorion Model, Perineal Cloth Model, and the Female Pelvis Model.

[78968](#) **Model Set**

[26464](#) **Female Pelvis Model**



CLOTH PELVIC MODEL SET

Use our flexible Cloth Pelvic Model to demonstrate how the pelvis changes during labour and birth. The Cloth Pelvic Model Set allows easy demonstration of the process of labour and delivery. Set includes the Foetal Model, the Placenta/Cord/Amnion/Chorion Model, the Perineal Cloth Model, and the Cloth Pelvic Model. The Cloth Pelvic Model measures 24 cm x 18 cm x 18 cm.

[53955](#) **Model Set**

[79808](#) **Cloth Pelvic Model**



VINYL PELVIC MODEL SET

Designed to accommodate delivery of the Foetal Model (shown above), the Vinyl Pelvic Model (25 cm x 25 cm x 18 cm) consists of two innominate bones, sacrum with coccyx, and two lumbar vertebrae. Model Set includes the Foetal Model, the Placenta/Cord/Amnion/Chorion Model, the Perineal Cloth Model, and the Vinyl Pelvic Model.

[53954](#) **Model Set**

[54058](#) **Vinyl Pelvic Model**



DELUXE FLEXIBLE PELVIS MODEL SET

The Deluxe Flexible Pelvis Model (27 cm x 18 cm x 19 cm) can be manipulated to demonstrate how the pelvis moves to accommodate delivery. Model Set includes the Foetal Model, the Placenta/Cord/Amnion/Chorion Model, the Perineal Cloth Model, and the Deluxe Flexible Pelvis Model.

[78500](#) **Model Set**

[78951](#) **Deluxe Flexible Pelvis Model**



MINI-MODEL SET: POCKET UTERUS, BABY, AND PELVIS

Use this handy 6-piece set to explain what happens during labour and birth. The 14-cm-long baby has a detachable placenta/cord with amniotic sac. Pelvis and knitted uterus fit the baby. Includes receiving blanket and tote bag. Foetal model colour may vary.

[53953](#) **Mini-Model Set**



THE PROCESS OF GIVING BIRTH FLIP CHART

Present a comprehensive lesson covering conception through involution of the uterus. Features full-colour images, extensive presentation notes, a glossary of common Spanish terms, and additional black-and-white illustrations. The flip chart's easy-to-carry binder (33 cm x 58 cm) unfolds to create its own easel. 28 pages.

[43301](#) **Flip Chart**



LABOUR & BIRTH



UPDATED!

CERVICAL DILATION EASEL DISPLAY

Handpainted, 3-D models graphically demonstrate cervical dilation from 1 cm to 8 cm as well as the thinning of the cervix. Comes with protective fleece cover. 23 cm x 30 cm.

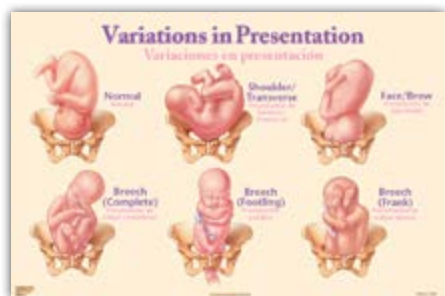
[79738](#) Easel Display



MOULDED PLASTIC DILATATION CHART

Moulded from plastic, this chart graphically depicts cervical dilatation at 1 cm, 2 cm, 3 cm, 4 cm, 5 cm, 6 cm, 8 cm, and 10 cm. 30 cm x 20 cm.

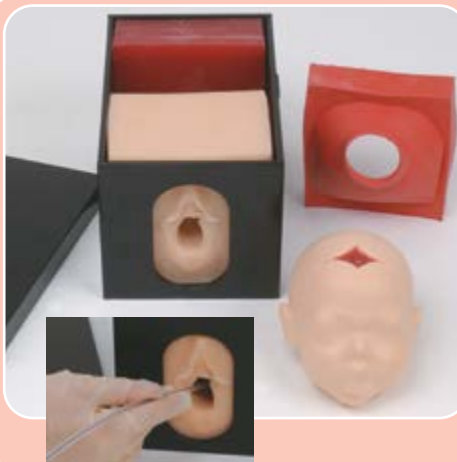
[70230](#) Moulded Chart



VARIATIONS IN PRESENTATION CHART

Beautifully illustrated chart depicts variations in presentation. Bilingual English/Spanish. Laminated. 89 cm x 58 cm.

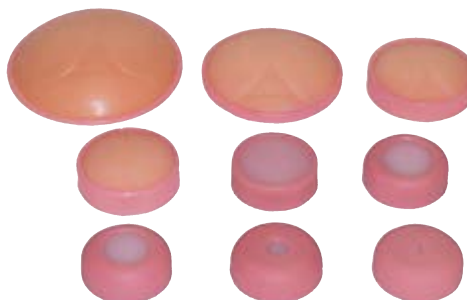
[90836](#) Chart



INTERNAL FOETAL MONITOR TRAINER

Provide realistic simulation for proper insertion of an internal electrode for foetal heart monitoring. Includes a foetal head with palpable, realistic fontanelles and suture lines, a lower uterine segment, and one cervical dilation model depicting 4 cm of dilation. Components fit into a durable plastic container. Comes with lubricant, instructions, and nylon carrying case. 14 cm x 13 cm x 22 cm.

[79858](#) Trainer



INDIVIDUAL CERVICAL DILATION MODELS

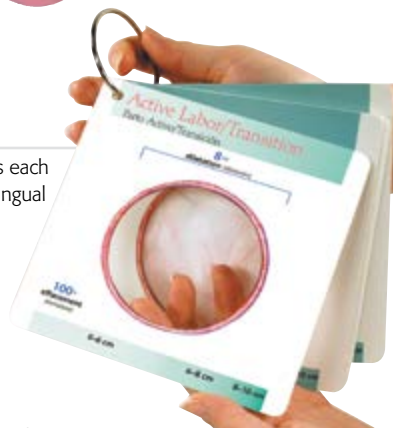
With a realistic, lifelike feel, these great hands-on teaching tools show 0-cm to 6-cm dilation as well as 8- and 10-cm dilation. Comes with carrying case.

[78959](#) Models (9)

LABOR PROGRESS POCKET GUIDE

Great visual guide to the progress of labour shows each of the 10 centimeters of dilation in actual size. Bilingual English/Spanish. 13 panels. 15 cm x 15 cm.

[38826](#) Pocket Guide



CHILDBEARING: THE CLASSIC SERIES

Flip charts feature colour illustrations that detail female and male reproductive anatomy, conception, foetal development, pregnancy changes, the birth process, and newborn appearance. More than 70 detailed line drawings on reverse panels. Includes related Spanish terms. 23 panels.

[50701](#) Flip Chart, Large-Size (58 cm x 51 cm)

[50702](#) Flip Chart, Desk Version (28 cm x 22 cm)





NOELLE™ MATERNAL AND NEONATAL BIRTHING SIMULATOR

Comprehensive system provides an accurate simulation of the complete birthing process. Includes a full-sized intubatable maternal manikin, articulated birthing baby, and full-sized intubatable and cyanotic newborn that changes colour with positive pressure ventilation. Comes with carrying bag. 155 cm long.

54276 Simulator

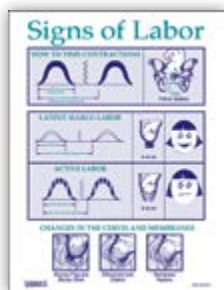


ADVANCED CHILDBIRTH SIMULATOR

With two vinyl foetuses, this simulator can be used to demonstrate cephalic or breech presentation, caesarean section, episiotomy, vertex presentation, and prolapse of the umbilical cord. The full-scale female torso, made of supple, lifelike vinyl, has all major anatomical landmarks. Comes with carrying bag. 51 cm x 46 cm x 25 cm.

54275 Simulator, Beige

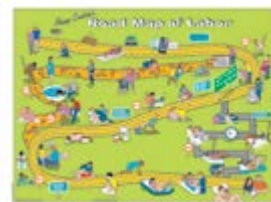
54274 Simulator, Brown



SIGNS OF LABOR TEAR PAD

Expectant parents receive a quick summary of what they need to know about contractions and early labour. Two-sided. 100 sheets per pad.

52567 Tear Pad E



ROAD MAP OF LABOR TEAR PAD

Penny Simkin's Road Map of Labor is a fun way to teach expectant parents about what to expect during labour. The road map depicts labour as a journey from early labour to birth. Includes illustrations of comfort measures to use as labour progresses. Two-sided. 100 sheets per pad.

52725 Tear Pad E



HOW TO TIME CONTRACTIONS TEAR PAD

Teach expectant mothers how to time contractions. English on one side and Spanish on the other. 100 sheets per pad.

52517 Tear Pad E



SAFE POSITIONS WITH AN EPIDURAL TEAR PAD

A quick reference by Penny Simkin on labour positions that are safe for mothers who have been given an epidural. Two-sided. 100 sheets per pad.

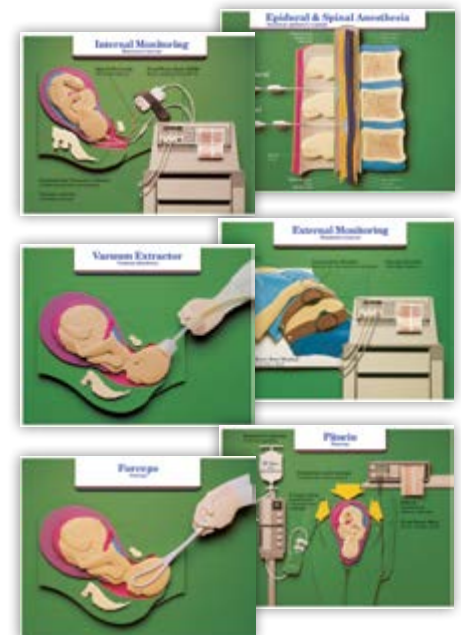
52728 Tear Pad E



ESSENTIAL LABOUR AND BIRTH CHARTS

Colourful, informative artwork provides the perfect tools to teach the process of birth. Each chart contains key Spanish terms. All six laminated charts have grommets for easy hanging and measure 56 cm x 71 cm.

90630 Charts (6)



LABOUR AND BIRTH INTERVENTION CHART SET

Charts with a 3-D look cover a variety of procedures. Black-and-white illustrations on the back provide additional information. Grommets included for easy display. Bilingual English/Spanish. Each chart is laminated and measures 46 cm x 36 cm.

90615 Chart Set (6)

BREASTFEEDING



baby bellies

Tear Pad



Display



Pocket Models



UPDATED!

BABY BELLIES™

Encourage breastfeeding mothers who have questions about how much breastmilk a newborn needs with the Baby Bellies display, pocket models, and tear pad. Each product shows how small a baby's stomach is on the first, third, and tenth days of life, making them perfect tools for teaching the importance of early and often breastfeeding. Pocket models feature the colour of a breastfed baby's healthy stool on the corresponding day. Tear pad is English on one side and Spanish on the other and has 100 sheets per pad.

[79077](#) Display

[52069](#) Tear Pad **E**

[53526](#) Pocket Models



BREASTFEEDING BENEFITS BOX

Ideal for starting a discussion on breastfeeding, the 14 objects in this box represent benefits of breastfeeding, including emotional bonding (mum and baby bear), brain development (brain model), the baby's health (thermometer), and more. Comes with presentation notes. Box is 17 cm x 18 cm x 12 cm.

[79769](#) Box

UPDATED!

DIRTY DETAILS: BREASTFED BABY STOOL STORY™ DISPLAY

Teach new mums how their breastfed newborns' dirty nappies reveal whether their babies are getting enough breastmilk. Featuring the look of dirty nappies without the mess, this unique, realistic display shows the colour and texture of a healthy breastfed baby's first dark, sticky stool; green stool by day 3 or 4; and yellow watery or mushy stool by day 5. Comes with informative, two-sided tent card.

[78931](#) Display



SAFE STORAGE OF BREASTMILK MAGNET

Provide handy guidelines for the safe storage of expressed breastmilk. Designed to stick on the refrigerator for quick reference. Comes in packs of 50. 11 cm x 6 cm.

[30050](#) Magnet (50)



LACTATING BREAST MODELS

Realistic Lactation Model (14 cm x 25 cm 10 cm) and Small Lactating Breast Model (10 cm x 14 cm x 6 cm) feature an enlarged nipple and darkened areola. Use to demonstrate hand expression of breastmilk, pumping, relief for plugged milk ducts, reverse pressure softening, breast massage, and more. Models do not eject milk. Each model comes with carrying case.

- [78902](#) Small Model, Beige
- [78903](#) Small Model, Brown
- [78900](#) Lactation Model, Beige
- [78901](#) Lactation Model, Brown



CLOTH BREAST AND HAND PUPPET MODEL SET

Our Cloth Breast Model and Breastfeeding Hand Puppet are combined for a comprehensive breastfeeding education experience. Cloth Breast Model contains two beads to simulate a plugged duct and a breast lump, and a foam insert closely simulates the look and feel of an engorged breast. Includes teaching ideas and instructions and measures 14-cm diameter.

- [75320](#) Set, Beige
- [75340](#) Set, Brown
- [79811](#) Model, Beige
- [79812](#) Model, Brown
- [85008](#) Puppet, Beige
- [85009](#) Puppet, Brown

FLAT AND INVERTED NIPPLE LACTATION MODEL SET

Two models in this set are ideal for identifying and demonstrating how to manage a flat nipple and an inverted nipple. The third model features a functional nipple that allows the instructor to demonstrate how a breast pump may help draw out a flat or inverted nipple, making it easier for a baby to latch. Comes with carrying case.

- [78904](#) Model Set



BREASTFEEDING EDUCATION MODEL

Holding a baby in their arms can help expectant mothers learn proper breastfeeding positions. This realistic, easy-to-clean doll lets them do just that and allows you to demonstrate other care techniques. The models represent 2- to 3-month-old infants. 53 cm long; 1.13 kg.

Male Models

- [53731](#) Light
- [53733](#) Brown
- [53735](#) African
- [53737](#) Asian

Female Models

- [53732](#) Light
- [53734](#) Brown
- [53736](#) African
- [53738](#) Asian

COLOSTRUM: THE GOLD STANDARD™ DISPLAY

Convenient, pocket-size visual makes it easy to understand the small amount of colostrum a newborn baby needs at each feeding. Real teaspoon filled with simulated colostrum comes with informative laminated plastic key card.

- [85156](#) Display



BREASTFEEDING



HOW FATHERS CAN SUPPORT BREASTFEEDING TEAR PAD

From helping Mum to bonding with the baby, this tear pad gives a father practical suggestions on how to be involved. English on one side and Spanish on the other. 100 sheets per pad.

[52652](#) Tear Pad E



BREASTMILK COMPOSITION: WHAT'S IN A DAY?™

Use this display to show mothers their amazing abilities to nourish their babies. Features models of colostrum, foremilk, and hindmilk that demonstrate how much milk a baby gets while breastfeeding in an average day. Accompanying, two-sided tent card explains each component's nutritional role. Includes carrying case. Available separately, tear pad is English on one side and Spanish on the other and has 100 sheets per pad.

[78978](#) [52501](#) **UPDATED!** Display
Tear Pad E



UPDATED!

SPINSMART™ BREASTFEEDING WHEEL

Fun, engaging activity teaches concepts, reinforces knowledge, and encourages discussion in every key area related to breastfeeding. Participants spin the wheel and then answer multiple-choice questions from one of eight topics. Comes with teaching guide that includes instructions and category questions. 47 cm x 58 cm.

[78138](#) Wheel



UPDATED!

BREASTFEEDING TEAR PADS

Provide essential information for breastfeeding mothers with these two-sided, bilingual tear sheets. Easy-to-understand text is English on one side and Spanish on the other. Set of eight includes one pad of each topic. 100 sheets per pad.

[52511](#) Waking a Sleeping Baby E
[52512](#) How to Tell Whether Your Baby Is Hungry E
[52513](#) How Breastfeeding Works E
[52518](#) Getting Ready to Breastfeed E
[52519](#) Positions for Breastfeeding E
[52521](#) Starting a Feeding E
[52592](#) Is My Baby Getting Enough Breastmilk? E
[52598](#) Facts About Colostrum E
[52050](#) Tear Pad Set (8) E

CHILD HEALTH & SAFETY



WHAT MUMMY DOES, BABY DOES™

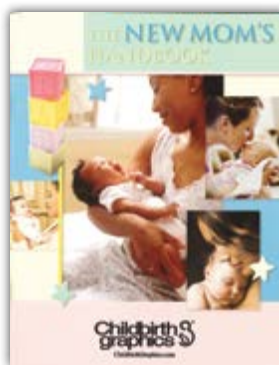
Reveal the hazards of substance abuse during pregnancy. Display (30 cm x 61 cm x 13 cm) comes with activity guide and allows viewers to watch as liquids representing alcohol, tobacco, or drugs are placed in the mother's mouth and pollute the foetal environment, represented by a foetus model in a plastic uterus. Hard plastic model (13 cm x 15 cm x 4 cm) illustrates how substances can cross the placenta and comes with presentation notes.

79838 **UPDATED!** Display
79809 Model

WHAT GOES IN YOUR BODY ... GOES IN YOUR BABY! PAMPHLET

Raise awareness of how hazardous substances—including alcohol, tobacco, marijuana, and more—can affect an unborn child. 8 panels.

38032 Pamphlet **E**



THE NEW MOM'S HANDBOOK

New mums receive valuable information to take care of themselves and their babies during the first 6 weeks after birth. 36 pages.

53502 Handbook **E**



HEALTHY NEWBORNS

Healthy Newborns features 58 full-colour images, includes Spanish subtitles, and is perfect to prepare expectant parents for a newborn. Covers normal newborn appearance, newborn reflexes, and common hospital procedures. Flip chart has an easy-to-carry binder that opens to create its own easel and features presentation notes on reverse panels.

43303 Flip Chart (48 panels,
19 cm x 38 cm)
38506 Pocket Guide
(24 pages, 11 cm x 17 cm)



NEW BABY TRAINING MODELS

Excellent teaching models, these easy-to-clean dolls have a vinyl body and jointed head, shoulders, and hips. Anatomically correct (foreskin intact) models represent 2- to 3-month-old infants. Each comes with a nappy with Velcro fasteners, a hospital identification bracelet, and a birth certificate. 56 cm long; 1.3 kg.

Male Model

53712 Light
53715 Brown

Female Model

53714 Light
53716 Brown

CHILD HEALTH & SAFETY



NEWBORN CARE KIT

Comprehensive kit features a 53-cm-long, easy-to-clean doll, baby wash, shampoo, cotton balls, lotion, hooded towel, washcloth, bathtub, three disposable nappies, 12 moist towelettes, baby gown, three shirts, socks, receiving blanket, bottle, spoon, and bib. Includes a Success with Breastfeeding bilingual tear pad and a laminated copy of seven Loving Baby Care™ series tear sheets.

75415 Kit



LOVING BABY CARE™ TEAR PADS

Easy-to-understand guides and colour photos give new parents confidence by providing step-by-step instructions for baby care. Each tear pad is English on one side and Spanish on the other. 100 sheets per pad.

- 52756** **Sponge Bathing** **E**
- 52752** **UPDATED!** **Swaddling** **E**
- 52620** **UPDATED!** **Bottle Feeding** **E**
- 52700** **Tub Bathing** **E**
- 52622** **UPDATED!** **Sleep Safety** **E**
- 52621** **Burping a Baby** **E**
- 52606** **Diapering Your Baby** **E**



MEDICINE CABINET OR CANDY BOX? DISPLAY

Fashioned after a medicine cabinet, this display features 28 models of lookalike sweets and medicines. Excellent for teaching children that some things that look good to eat are harmful. Cabinet opens and closes. 30 cm x 41 cm closed.

79253 Display



MAMA, MAKE ME SAFE INSIDE AND OUTSIDE PAMPHLET/POSTER

Written from the perspective of a child, this pamphlet explains how to childproof a home inside and outside. Unfolds into a 41-cm x 43-cm poster illustrating common hazards. 8 panels.

38580 Pamphlet/Poster **E**



SPLAT! THE HELMET SAFETY GAME™

Show young people why they need a helmet every time they bicycle, skate-board, etc., with this game that features two models of a person's head: One is protected by a helmet, and the other is not. Users place an egg "brain" inside each head and drop them on the game mat. Upon opening them up, children graphically see how much of a difference protective gear makes. Includes 60 game cards, mat, 100 plastic bags, and activity guide.

75023 Game



PROGRESSION OF BABY BOTTLE TOOTH DECAY DISPLAY

Help parents protect their children's teeth by showing them the damaging tooth decay that can occur if a baby or young child is put to bed with a bottle of juice, breastmilk, formula, or any other liquid containing naturally occurring or added sugars. Models are mounted on sturdy base. 28 cm x 9 cm x 9 cm.

[79212](#) Display



BABY BOTTLE TOOTH DECAY MODEL SET

Cast from a child's mouth, this model (6 cm x 4 cm x 5 cm) shows that the sugars that coat a baby's mouth whilst sleeping with a bottle can cause dental disease. Comes with Baby Bottle Tooth Decay tear pad, English on one side and Spanish on the other, 100 sheets per pad. Tear pad may also be purchased separately.

[79865](#) Model Set
[52561](#) Tear Pad E



SHAKEN BABY DEMONSTRATION MODEL

This model graphically demonstrates an infant's vulnerability to shaken baby syndrome (SBS). The model's translucent head allows viewers to see how a baby's brain can slam against the skull when the baby is inappropriately handled or shaken. Also emphasises the importance of supporting an infant's neck. Easy-to-clean and 48 cm long.

[53501](#) Demonstration Model



SHAKEN BABY SYNDROME TEAR PAD

Tear pad explains the effects and symptoms of SBS. Also provides tips for how to respond to crying. English on one side and Spanish on the other. 100 sheets per pad.

[52564](#) Tear Pad E



SIPPY CUP OF SUGAR™ DISPLAY

The sweet, sticky goo and model of decayed baby teeth in this display raise awareness that drinks are the largest source of added sugar in many children's diets. Two-sided tent card lists the health problems caused by too much added sugar and includes tips for limiting its consumption.

[79489](#) Display



WHAT YOU SHOULD KNOW ABOUT CHILDHOOD IMMUNIZATIONS FOLDING DISPLAY

Assure parents with basic information about how childhood immunisations can protect their children. Explains why people should be immunised and discusses more than 14 diseases that can be prevented by vaccinations. 147 cm x 57 cm opened.

[79304](#) Folding Display
[79590](#) Carrying Case
[79015](#) Wall Hanger

STOMACH SIZE WISE™ DISPLAY

As this set of models illustrates, children have smaller stomachs than adults, so they require small meals with nutritious snacks in between. Informative tent card is 28 cm x 22 cm.

[78977](#) Display



HEALTH SERVICES

HEALTH BUS/VAN • HEALTH TRAILER • HEALTH THEATRE • HEALTH TRAINING

HEALTH EDCO® Health Trailers are available for a single day, week, month, year, or more. Our pricing includes delivery and pickup, two Health Trailer banners to attract notice to your trailer, and furniture. *To help you entice the public into your Health Trailer, we will also include more than £1,000 worth of our most popular health education items.*

Unique HEALTH EDCO products will be included to reinforce your message.

**SMOKING CESSATION • MEN'S HEALTH
ALCOHOL • DRUG AWARENESS**



**HEALTHY EATING • SRE • WOMEN'S HEALTH
CHD • PHYSICAL ACTIVITY • AND MORE**

Extra Items

- Generator
- 3-m x 3-m Marquee
- Flat Screen TV
- Coffee Machine
- Two of your own Trailer Panels produced
- Windchaser Flags
- Promotional staff



We have a large array of options for your Health Trailer event to suit any budget. We offer advertising panels for your trailer produced with your own artwork, a generator if you are unable to plug the trailer into an energy source, a flat screen TV, your own Windchaser Flags, a 3-m x 3-m marquee, and even promotional staff to attract the public to your event.

**Contact us to speak
about how we can provide
you with a HEALTH EDCO®
Health Vehicle for your
next event.**

**0845 180 0505
Info@wrsgroup.co.uk**

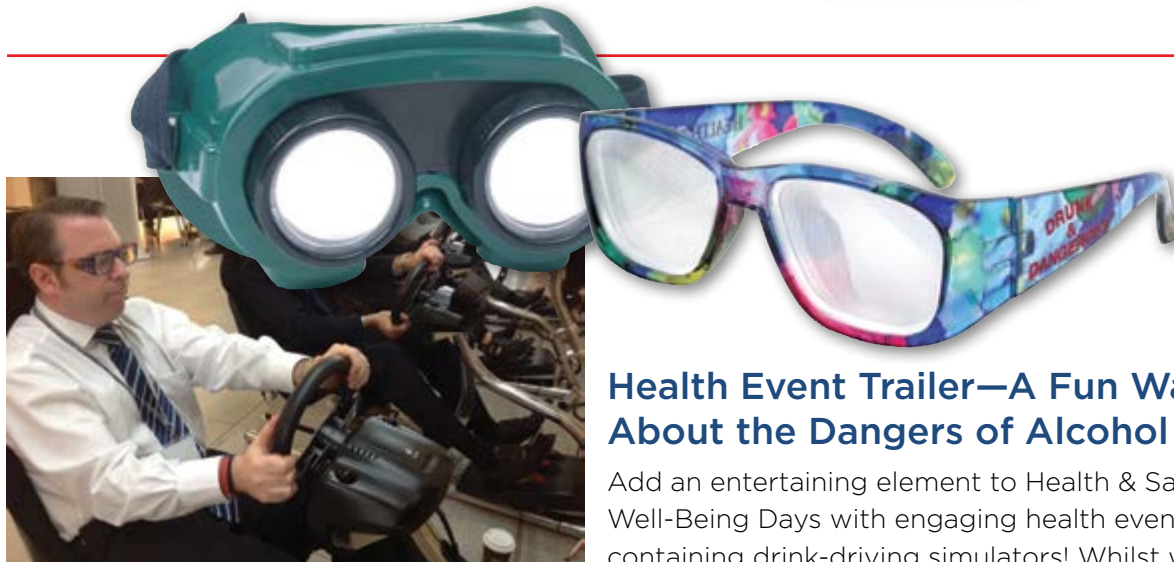
health BUSES

HealthBuses.com

Health buses can be used as an inviting environment to provide Smoking Cessation Advice, Health MOT's, NHS Health Checks, Change4Life events, and many other public health promoting initiatives.

We can supply drivers, service loans of a Health Bus in which all major costs are included, promotion staff, artwork guidance, and much more. We will also include more than £1,000 worth of our most popular HEALTH EDCO® health education items to help you interact with your community audience.

Contact us at **0845 180 0505** so that we can provide you with a full quote.



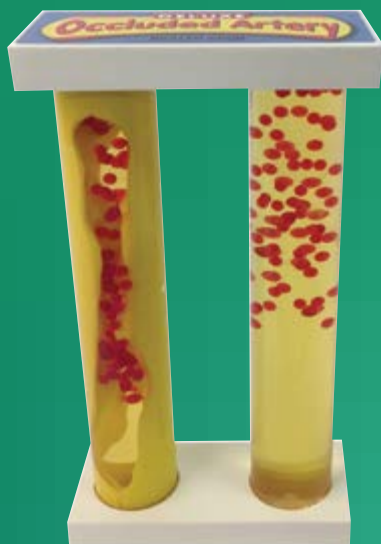
Health Event Trailer—A Fun Way to Teach About the Dangers of Alcohol & Driving

Add an entertaining element to Health & Safety/School Well-Being Days with engaging health event trailers containing drink-driving simulators! Whilst wearing our Health Edco Drunk & Dangerous™ Glasses or D.W.eyes™ Goggles, participants who use the simulators will experience the startling realities of drink-driving and alcohol intoxication in a fun but educational way. Trained staff can also provide insight into the dangers of mobile phone use whilst driving a vehicle. Driving awareness can be tested by performing hazard perception tests on the included LED monitors, which can be operated inside or outside the mobile exhibition unit.



For further details or to book our Health & Safety Unit for your school or workplace, please call or email.

Your Partner in Health Education



79153 Deluxe Occluded Artery Model—p. 25



79216 Drug Identification Guide—p. 14



79210 Smokey Sue Smokes for Two™
—p. 8



53501 Shaken Baby Demonstration Model—p. 63

79120 A Year's Worth of Tar™ Model—p. 6



RETURN ADDRESS
Unit 1,
Maritime Street,
Copse Road,
Fleetwood,
Lancashire FY7 7PB

3 easy ways to order

Order Online HealthEdco.co.uk
Order by Phone 0845 180 0505
Order by Email Info@wrsgroup.co.uk



Like us, follow us ...

2020HEUK1-14975-0120

